

What's a map?

a picture or chart that shows the different parts of something

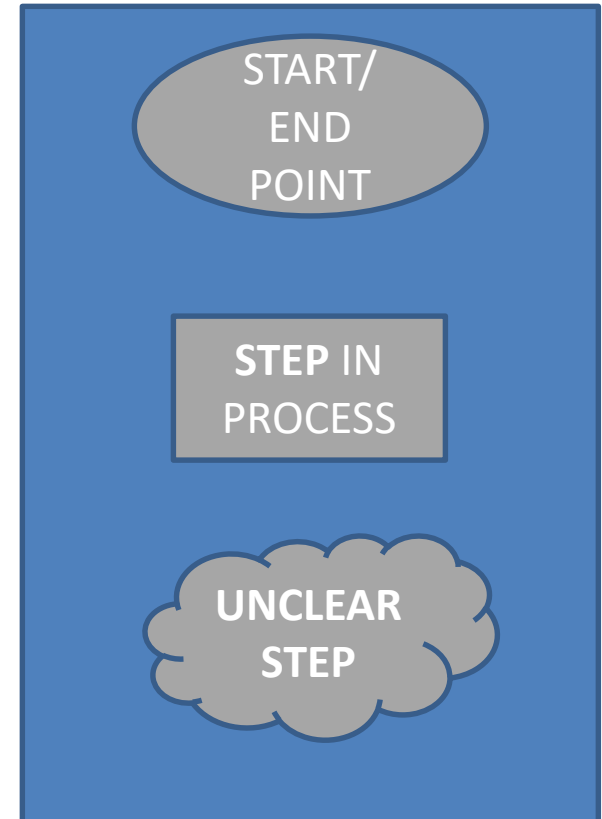
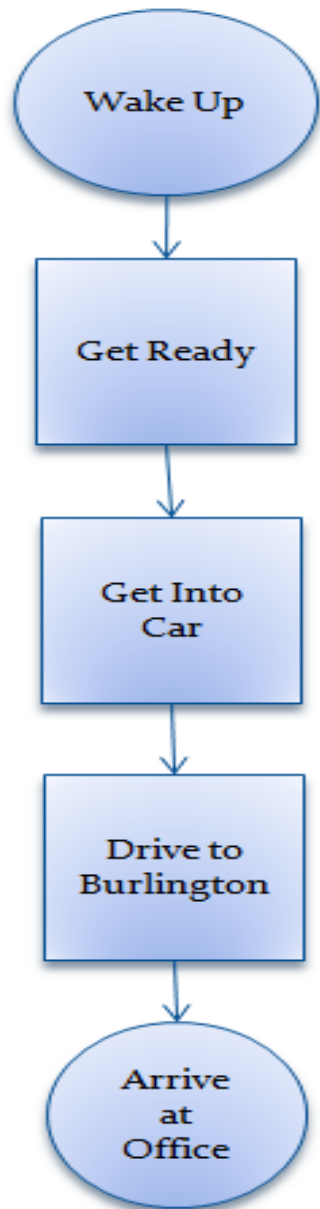


Source: MaryCatherine Arbour, Home Visiting Collaborative Improvement and Innovation Collaborative

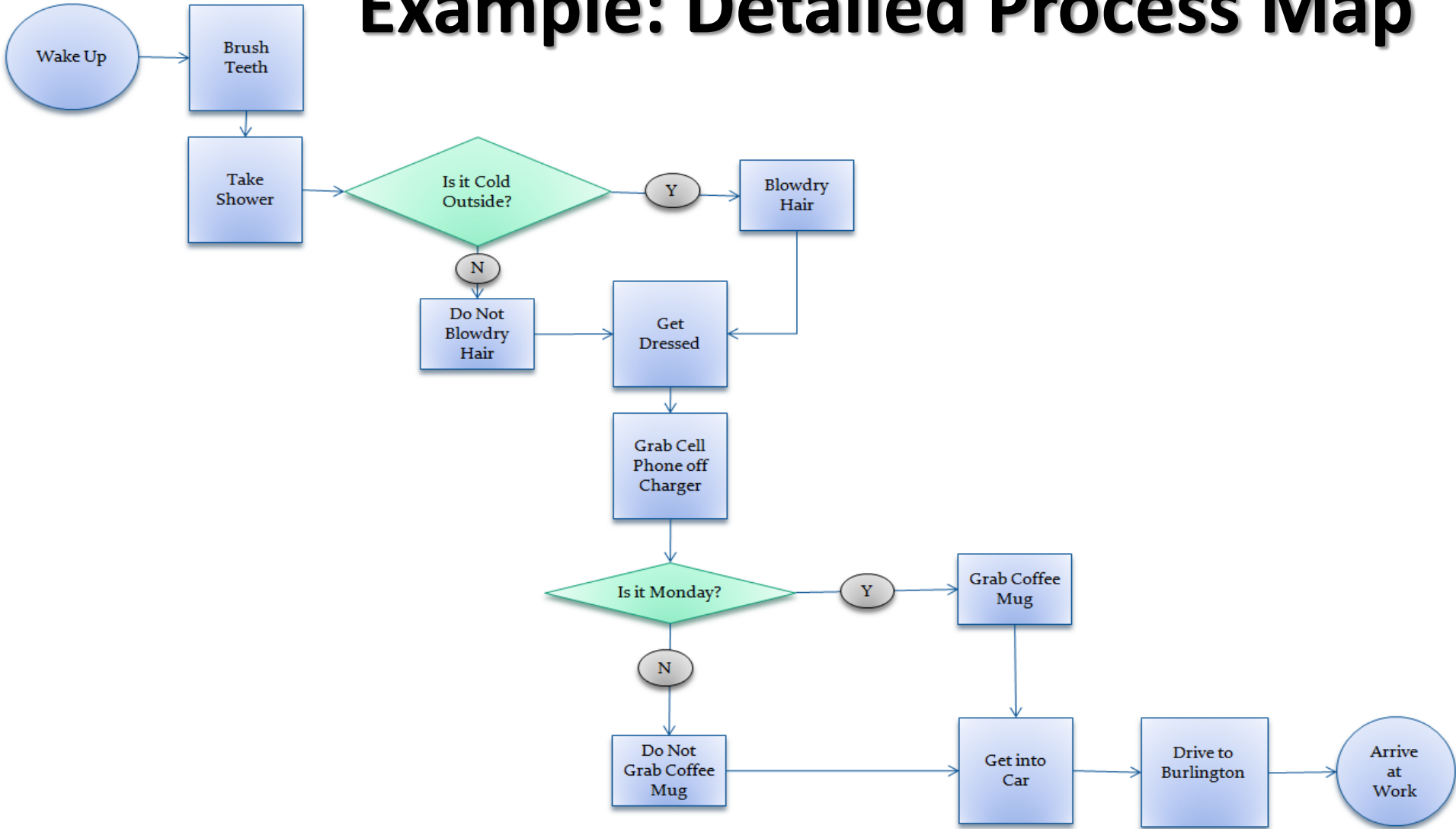
What is a Process?

a series of actions or
operations conducting to an end

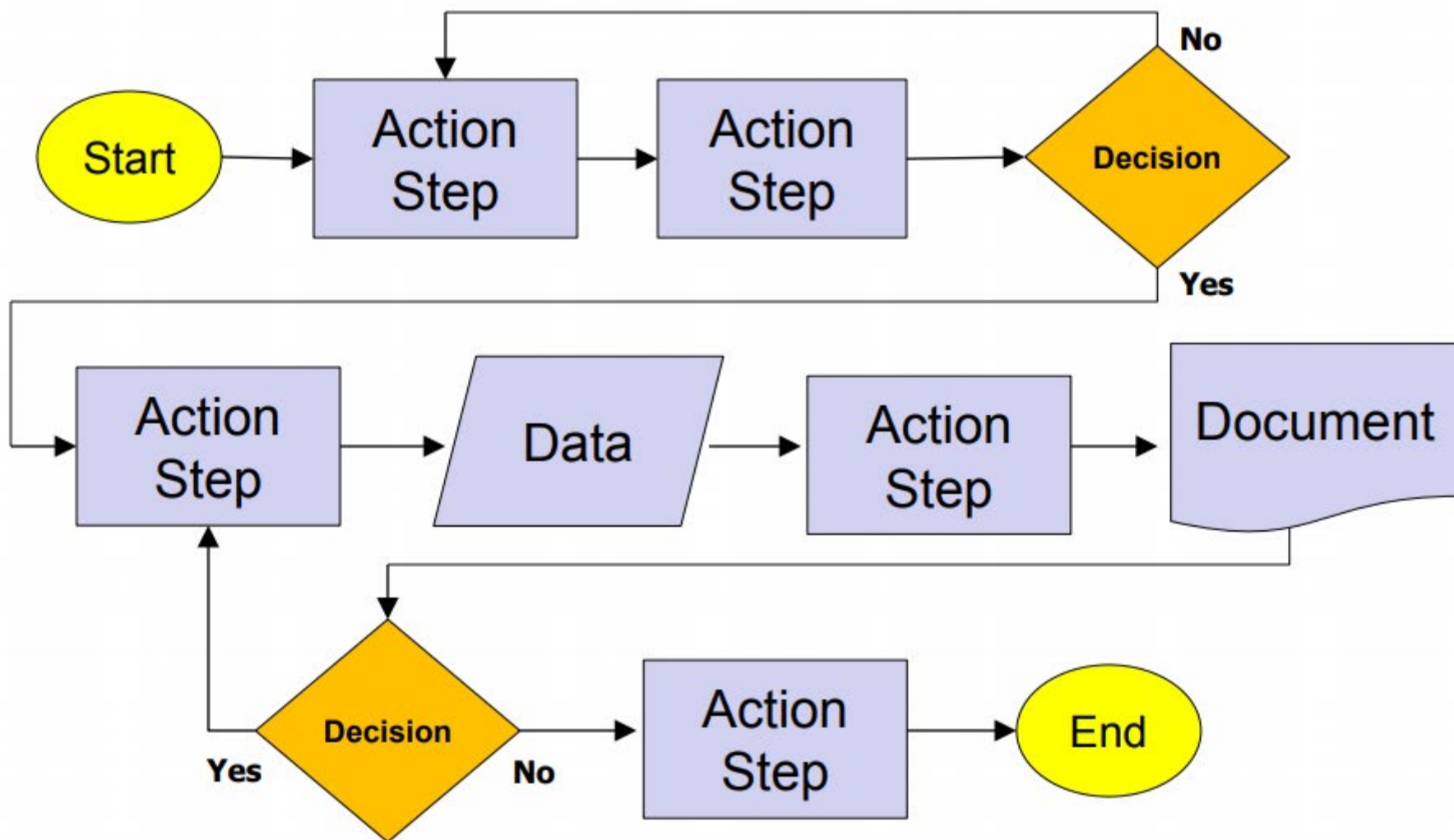
Example: High-level Process Map



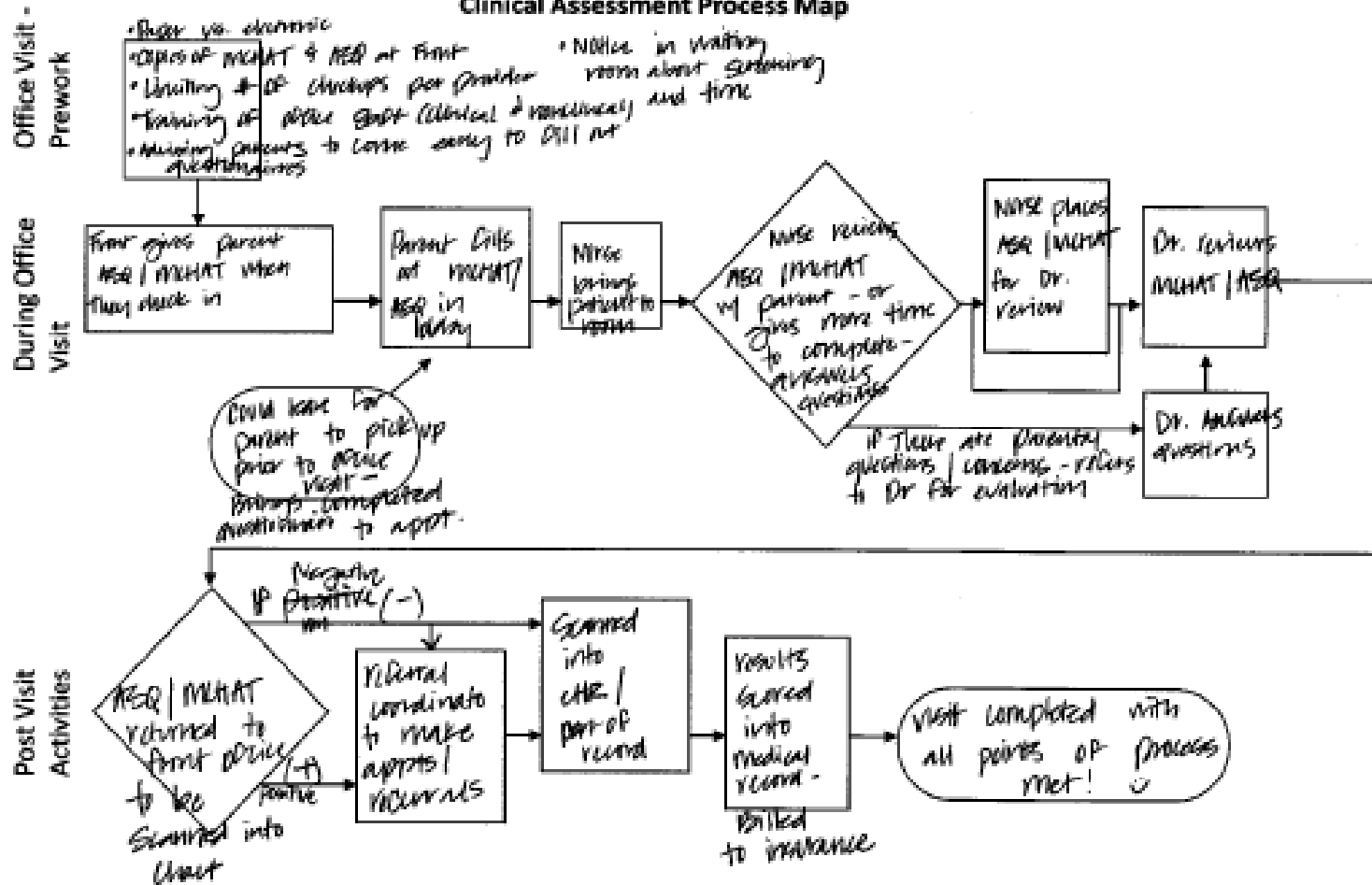
Example: Detailed Process Map

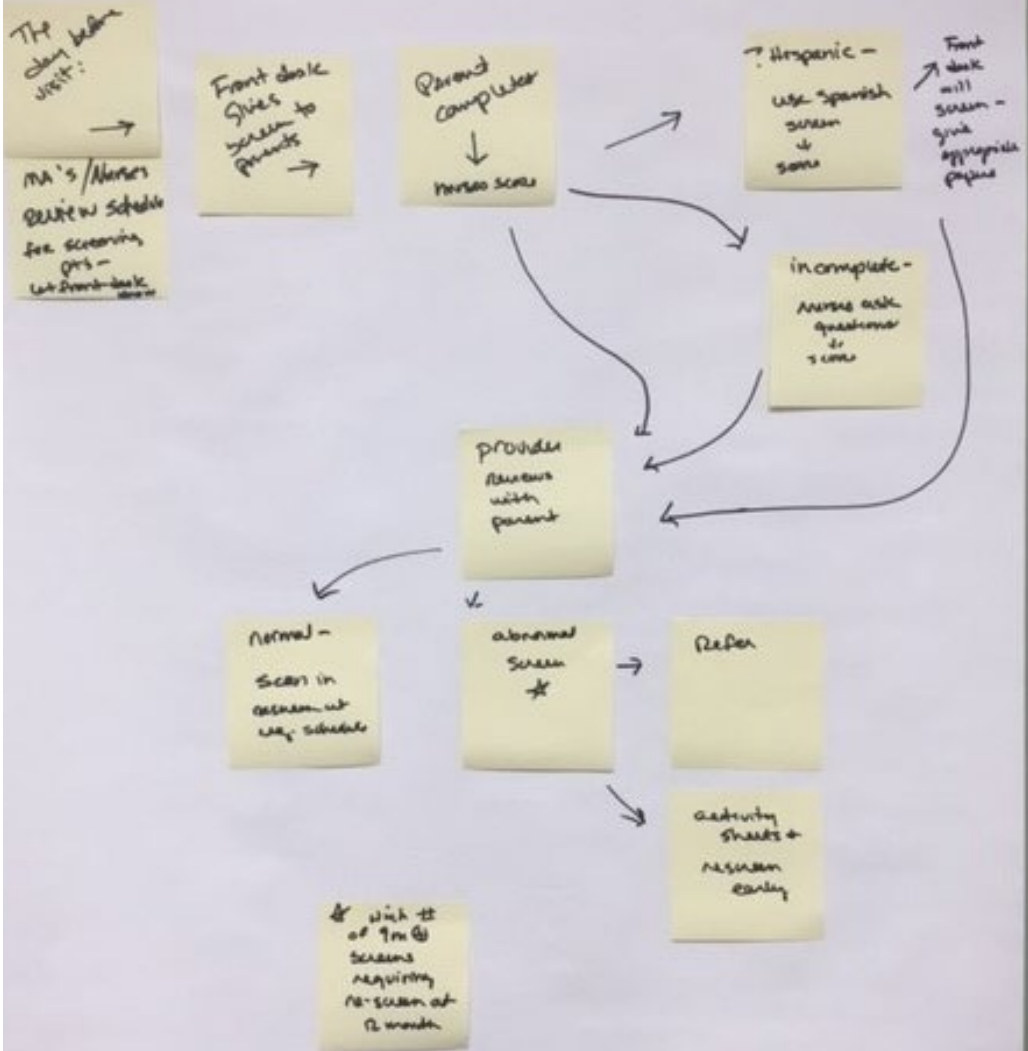


Process Map & Shape Template

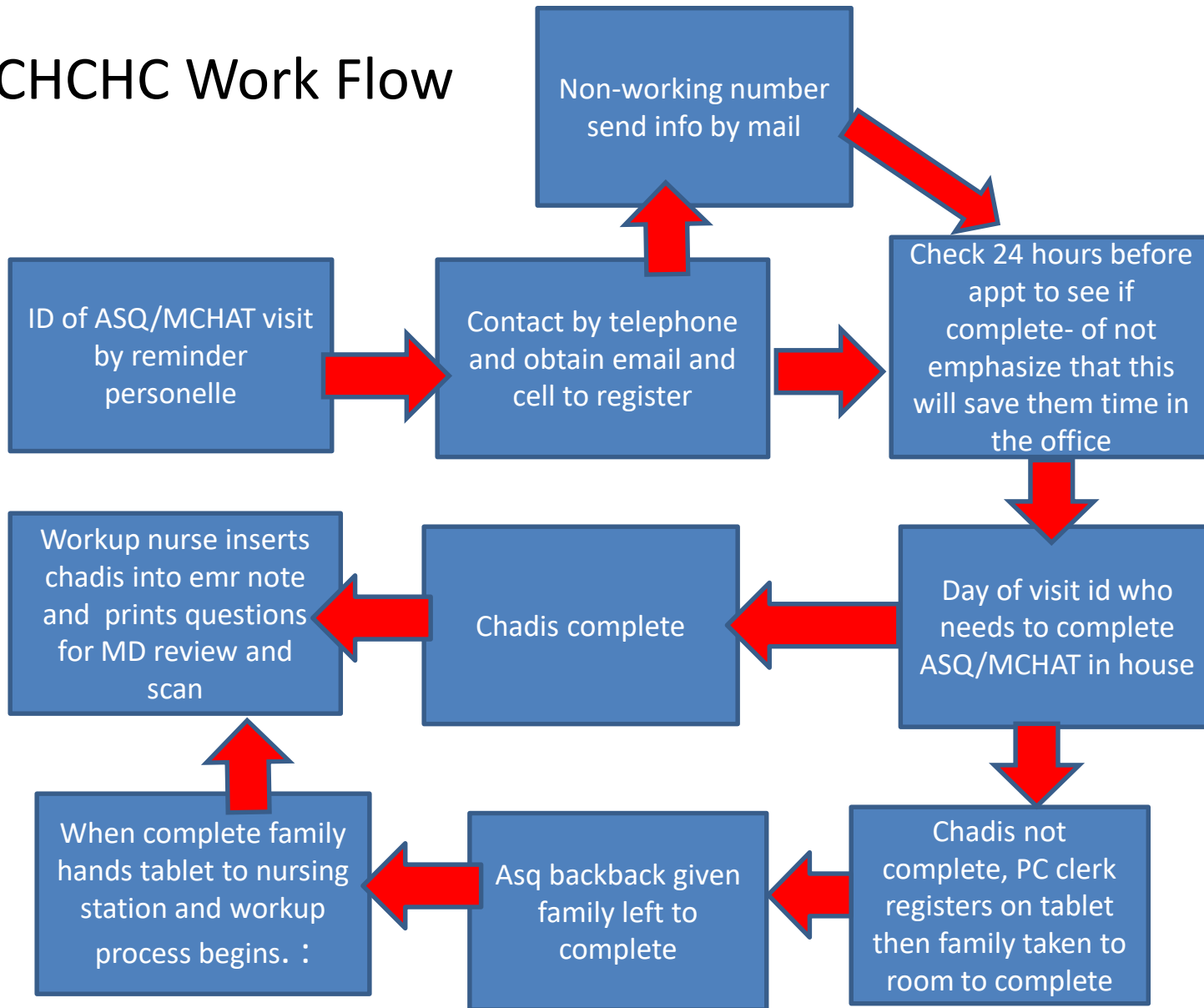


Clinical Assessment Process Map





CHCHC Work Flow



Dietitian Process Map

