

Model for Improvement

3 Key Questions for Improvement

What are we trying to accomplish?

AIM

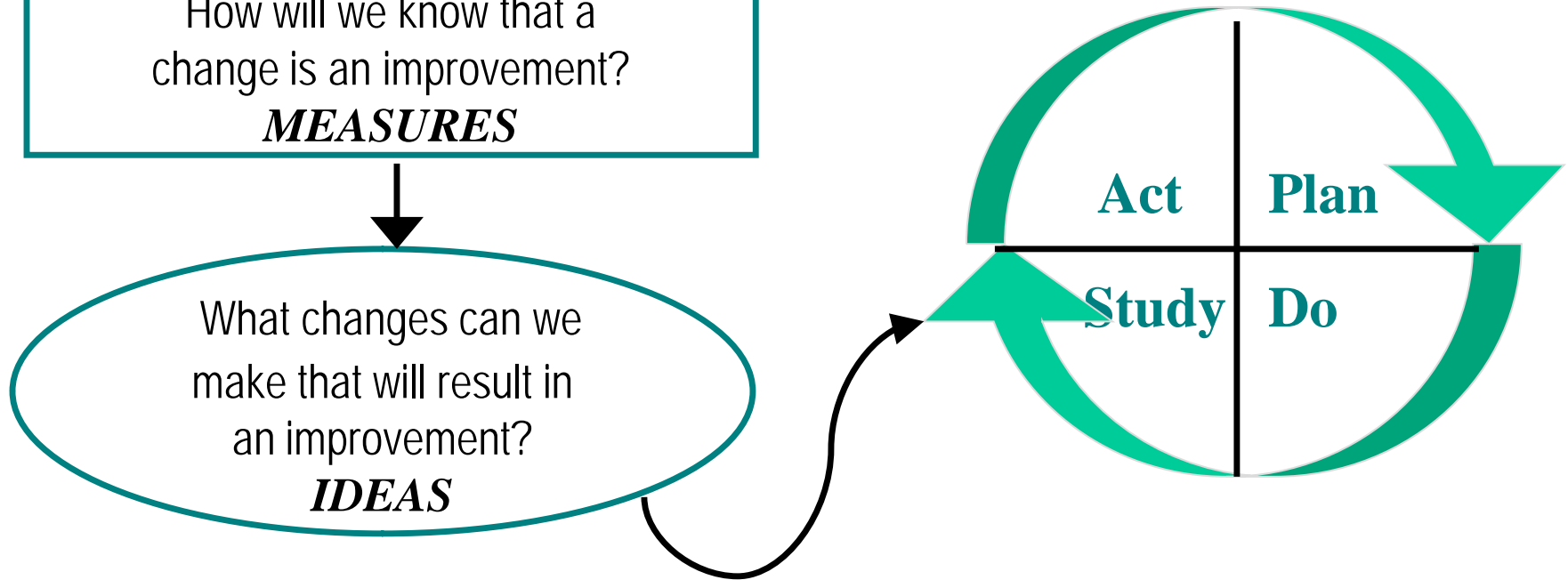
How will we know that a change is an improvement?

MEASURES

What changes can we make that will result in an improvement?

IDEAS

Test Ideas & Changes in Cycles for Learning & Improvement



Global Aim Statement, Flowchart and Specific Aim Statement



Write a Theme for Improvement: _____

Global Aim Statement

Create an aim statement that will help keep your focus clear and your work productive:

We aim to improve: _____
(Name the process)

In: _____
(Clinical location in which process is embedded)

The process begins with: _____
(Name where the process begins)

The process ends with: _____
(Name the ending point of the process)

By working on the process, we expect: _____
(List benefits)

It is important to work on this now because: _____
(List imperatives)

Create Flowchart

Specific Aim Statement

We will: improve increase decrease

The: quality of number/amount of percentage of _____
(process)

By: _____
(date)

OR

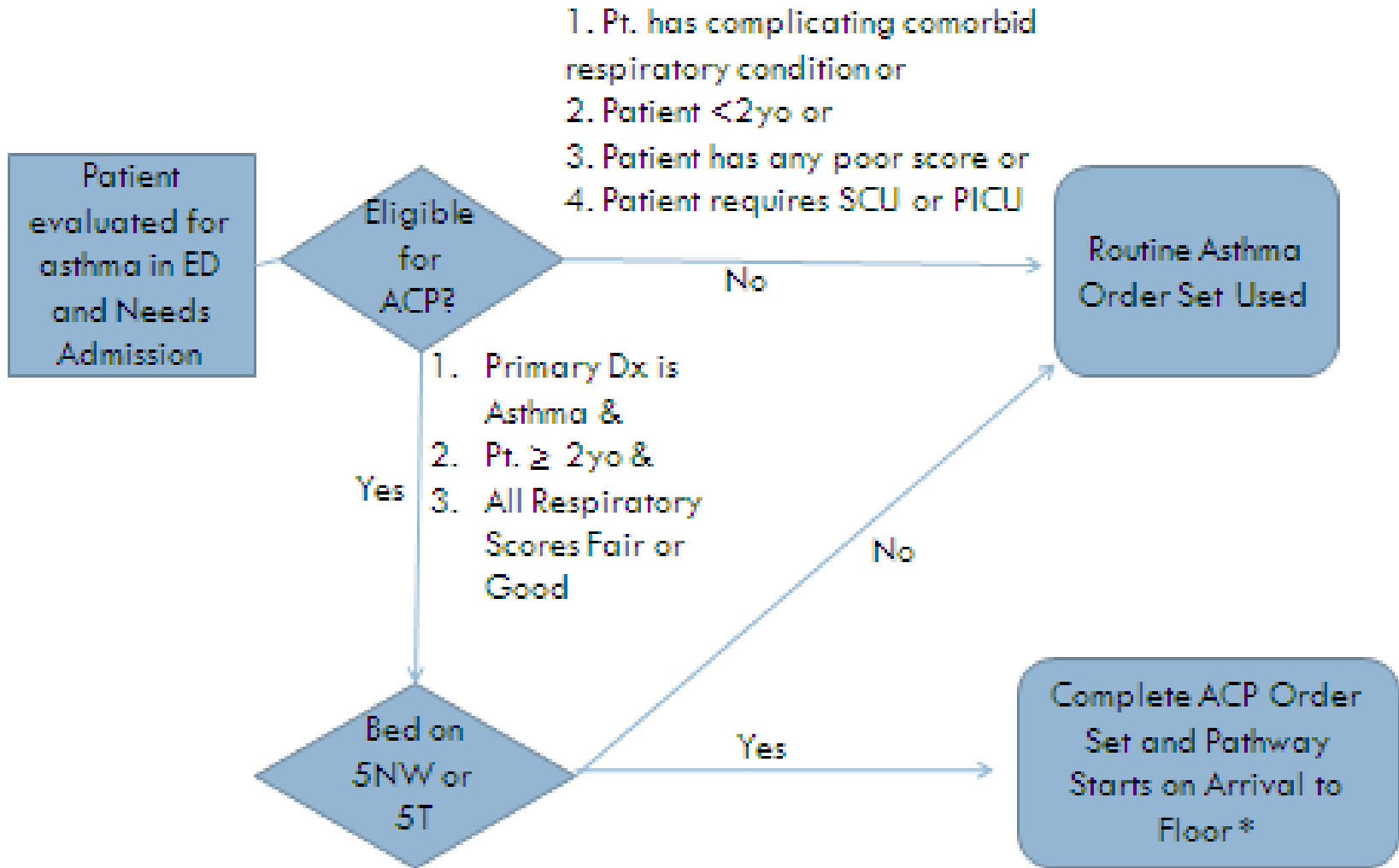
From: _____
(baseline state/number/amount/percentage)

To/By: _____
(describe the change in quality or state the number/amount/percentage)

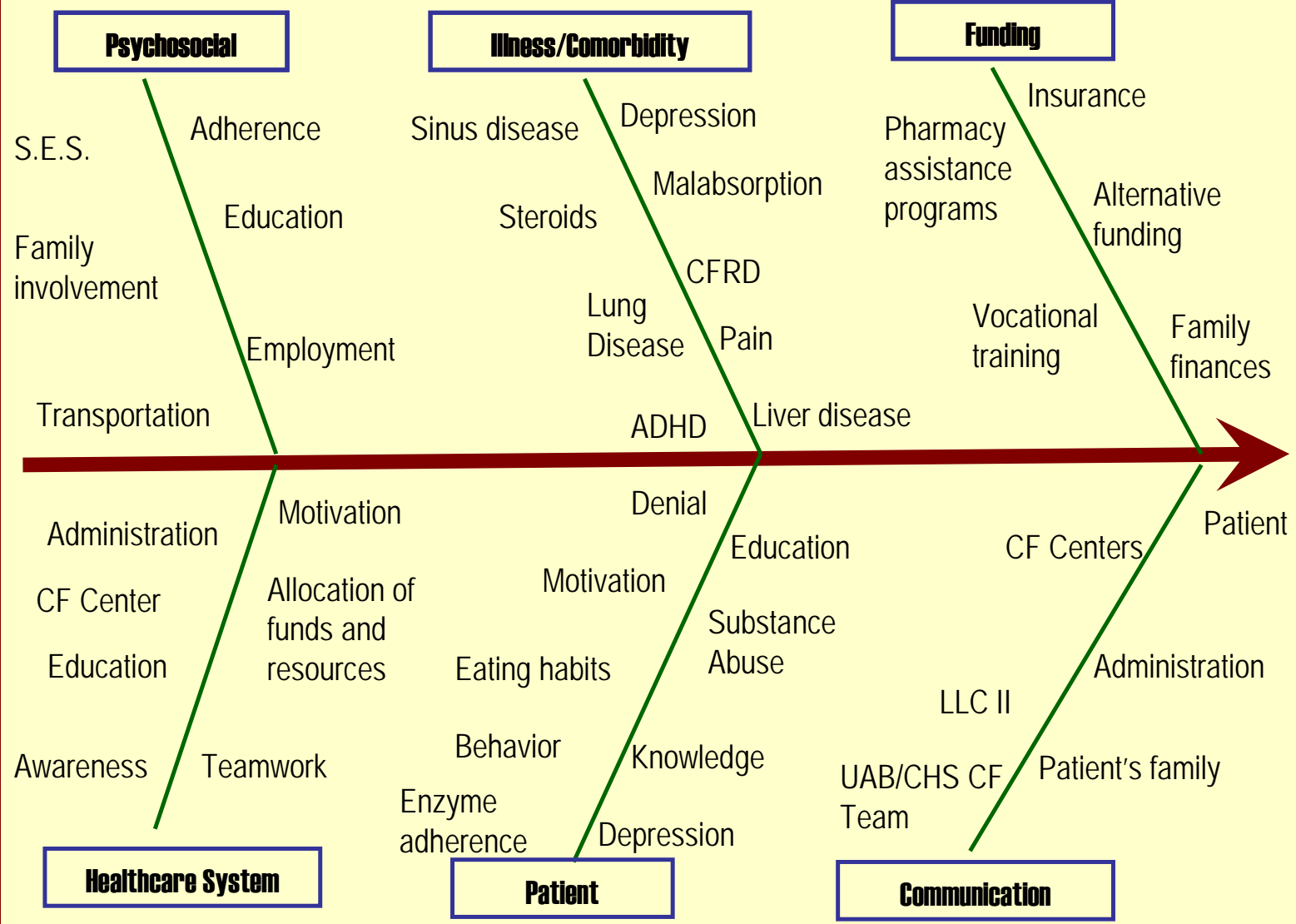
By: _____
(date)

Example: We will decrease the amount that my dog weighs from 55 pounds to 50 pounds by August 31, 2007.

Asthma Admission Flow for Asthma Clinical Pathway (ACP)



Influences on Nutritional Success



Global Aim Statement
(Include registry data)

Registry Data:

Specific Aim Statements

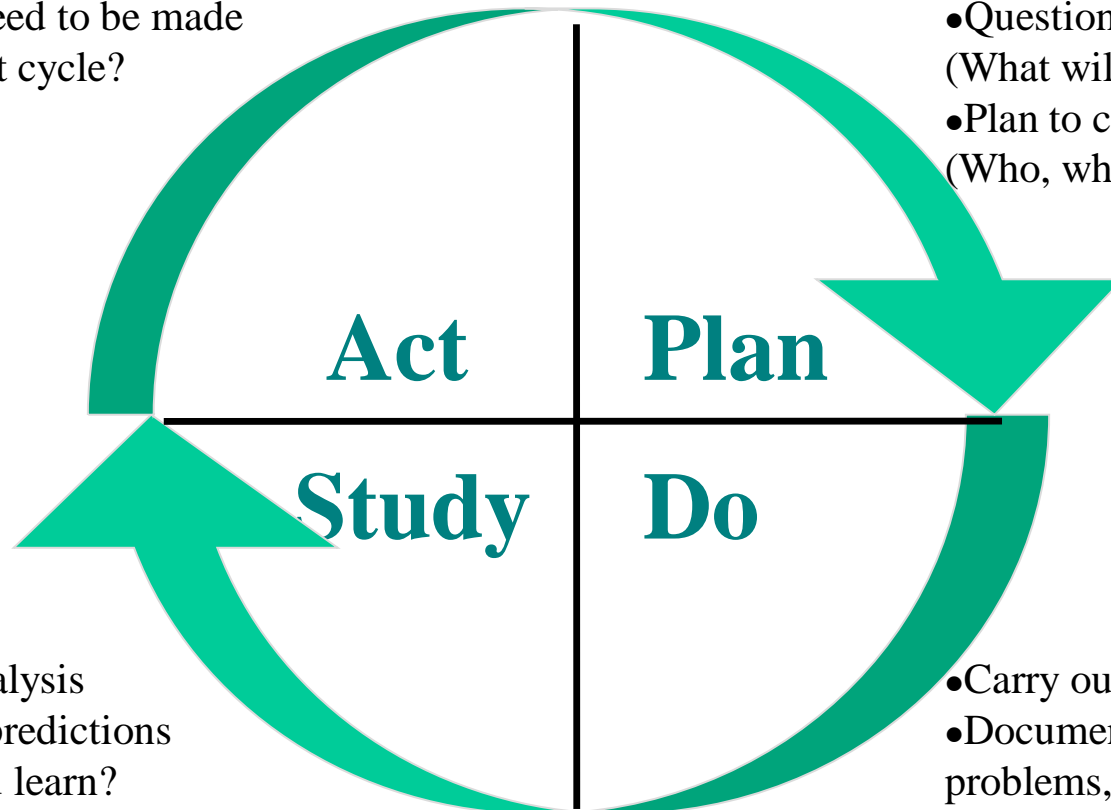
Measures
(Operational Definitions)

PDSA Cycles

Test Ideas & Changes in Cycles for Learning & Improvement

- What refinements or modifications need to be made
- What's the next cycle?

- Objective
- Questions& predictions (What will happen & why)
- Plan to carry out the cycle (Who, what, where, when)



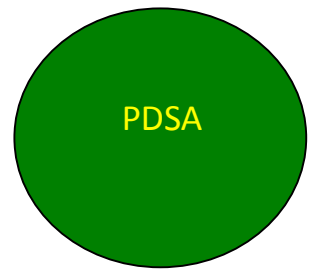
- Complete analysis
- Compare to predictions
- What did you learn?
- What conclusions can you draw from this test?

- Carry out the plan
- Document experience, problems, surprises
- Collect data as planned; begin analysis

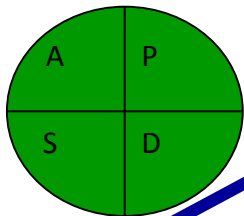
PDSA Example



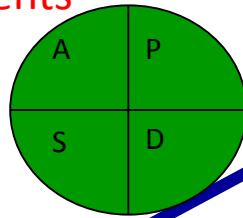
PLAN	DO	STUDY	ACT
<ol style="list-style-type: none">1. Team will huddle and identify all patients of Dr. Jones; 3 will be selected for asthma form2. Olivia will complete order form (stored in wall storage beside charts) on those 3 charts or enter orders in EMR on all flagged patients3. Angela will review questions with patients4. Dr. Jones will complete chart5. Marie will collect data for Excel file	<ol style="list-style-type: none">1. Forms could not be found in EMR or if paper were not stored in logical place2. Day was busy; flag was ignored on last patient and asthma form wasn't on chart	<ol style="list-style-type: none">1. What went well? Team huddle identified all patients; asthma form was easy to use2. What didn't go well? Asthma form difficult to find; flag was ignored3. Surprises? Busy day; didn't expect to forget patients	<ol style="list-style-type: none">1. Continue huddle2. Will place forms in logical place. Olivia will do this immediately3. Will place a reminder poster in work room to watch flags4. Try again tomorrow



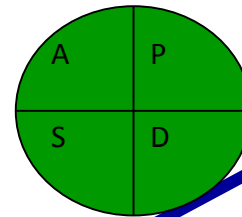
Develop asthma form



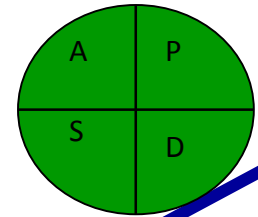
Use asthma form for 3 of Dr. Jones patients



Use asthma form for all of Dr. Jones patients



Use asthma form for 3 patients on all other providers



Improvement Ramp