

# DIRECTIONS TO THE CLINICAL RESEARCH UNIT

*15<sup>th</sup> floor of Jefferson Tower at UAB  
625 19<sup>th</sup> Street South Birmingham, AL  
35233*

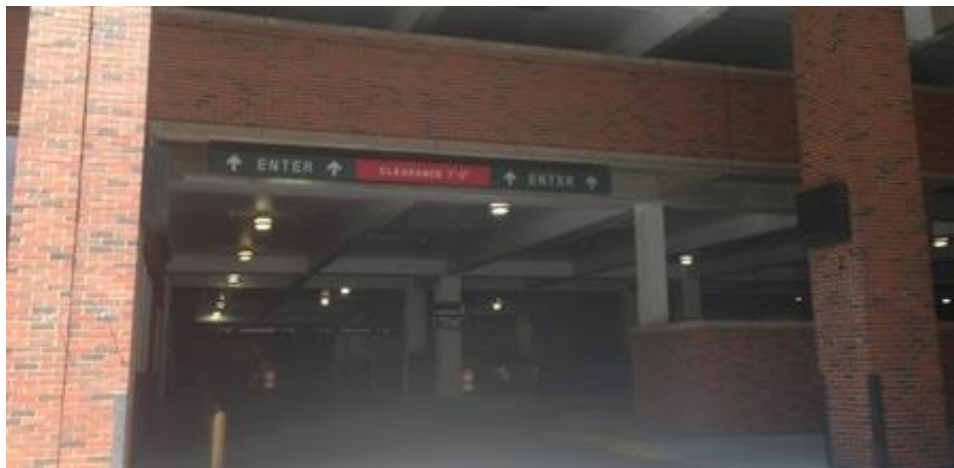
## **IF PARKING IN THE 6<sup>TH</sup> AVENUE PARKING DECK**

---

1960 6<sup>th</sup> Ave South Birmingham, AL 35233

Inform the attendant/security officer you are here for an appointment in the CRU  
(Clinical Research Unit)

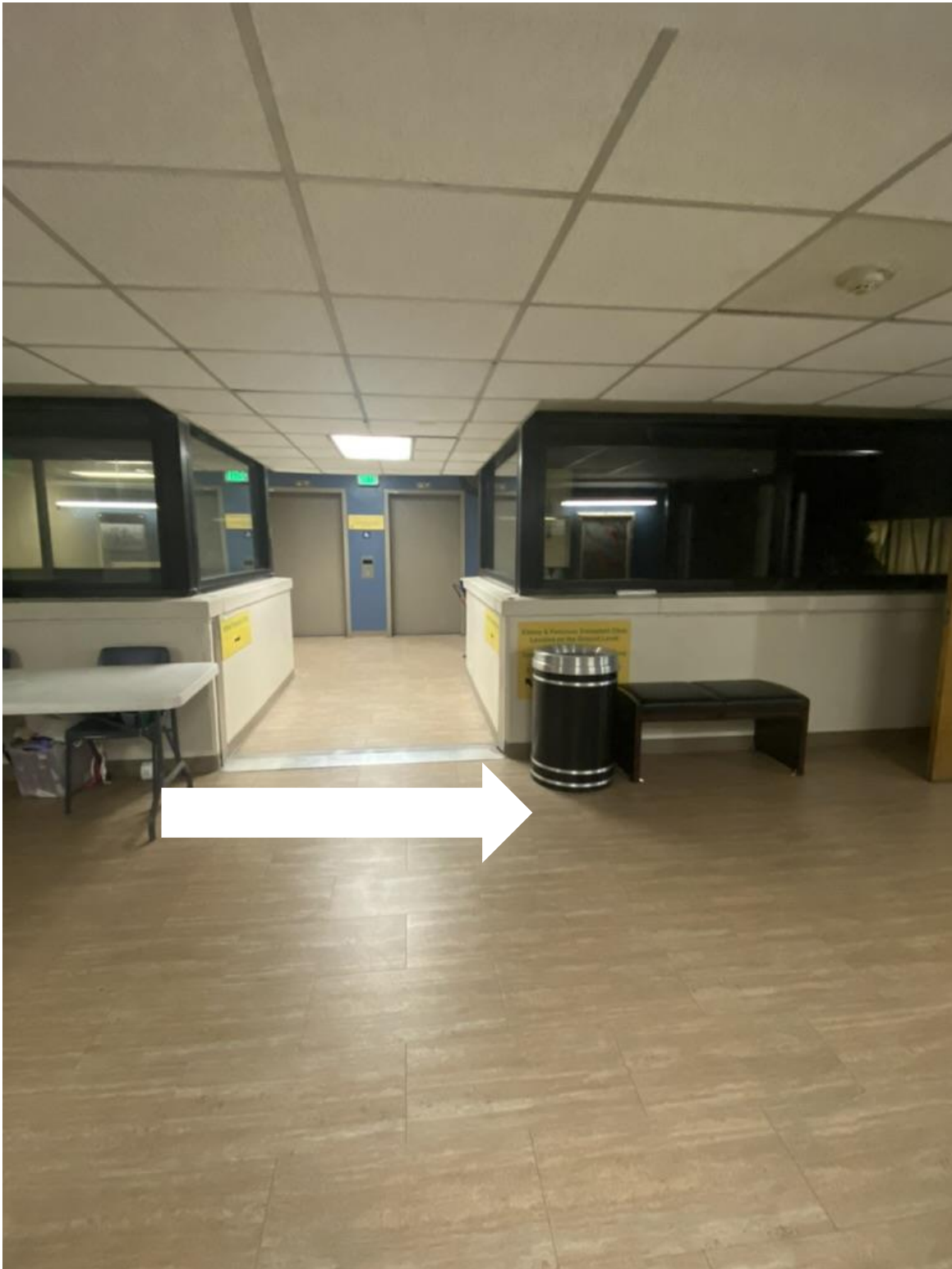
Park on the 2<sup>nd</sup> floor of the parking deck



**From the 2<sup>nd</sup> floor of the parking deck enter through these doors  
Enter through the doors that say Jefferson Tower**



Once inside the building from the parking deck, take a right



**Continue Straight and follow the sign to Concourse D; Jefferson Tower**

There may also be a sign for Subway





Walk down the crosswalk and follow it to the right. Continue to follow signs for Jefferson Tower



If it is the weekend, the doors under “Welcome to the North Wing” may be locked. If so, and no one is available to open the door, call the number provided by your coordinator (either the coordinator or the CRU)



Take a left past the “Welcome to North Wing” sign and proceed down the long hallway; take a right at the end of the hallway



Proceed down the shorter hallway and take a left to the elevator bank





Take the elevator to the 15<sup>th</sup> floor



**When on the 15<sup>th</sup> floor, proceed to the right and follow signs for the  
Clinical Research Unit**



**Enjoy your stay with us and thank you for participating in this valuable  
research!**