

# Small Animal Glycemic Clamp Core: Glucose Clamps in the Conscious, Unrestrained Rodent

## The Gold Standard for Assessment of Insulin Sensitivity

Initially developed to investigate insulin sensitivity in humans, the hyperinsulinemic-euglycemic clamp procedure has been adapted to other species, such as apes, dogs, rats, and mice. This procedure provides a mechanistic interrogation of insulin action in the intact rodent. Thus, we are able to help you uncover existing pathologies and identify novel therapeutic interventions. During the clamp, hyperinsulinemia is achieved by a constant insulin infusion through an indwelling venous catheter. Blood glucose is measured via an indwelling arterial catheter allowing both infusion and sampling to occur in the conscious, unrestrained rodent with minimal stress. Euglycemia is maintained throughout the study via a concomitant glucose infusion at a variable rate (GIR), and provides the primary measure of whole-body insulin action, as animals with enhanced insulin sensitivity require a greater GIR. The hyperinsulinemic-euglycemic clamp can be conducted as described above (cold) or utilizing radiolabeled tracers ( $[3-^3\text{H}]\text{-D-glucose}$  and  $[^{14}\text{C}]\text{-2-Deoxy-D-glucose}$ ) to assess tissue-specific glucose uptake, endogenous glucose appearance, and other metabolic parameters.

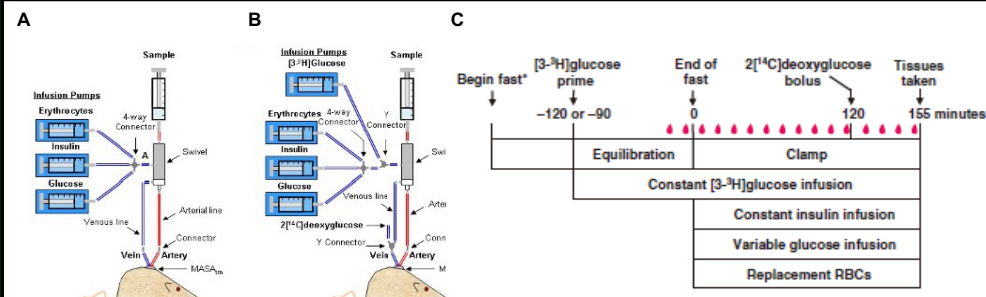


Figure 1. Depiction of the experimental setup for Cold (A) and Tracer-based (B) clamps. Infusion and sampling time-line during a typical glucose clamp experiment.

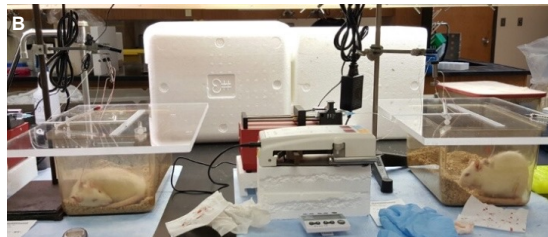


Figure 2. Current experimental setup for glycemic clamping in mice (A) and rats (B).

## Contact information

- Kirk Habegger, PhD, Associate Professor, Dept. of Medicine, Endocrinology  
E-mail: [kirkhabegger@uabmc.edu](mailto:kirkhabegger@uabmc.edu)
- Teayoun Kim, PhD, Instructor, Dept. of Medicine, Endocrinology  
E-mail: [teayounkim@uabmc.edu](mailto:teayounkim@uabmc.edu)  
Shelby Bldg. 1230

## Services offered:

- **Glucose or Insulin Tolerance Tests**
- **Indwelling catheter cannulation**
  - Jugular vein (insulin, glucose, tracer infusion)
  - Carotid artery (blood sampling)
- **In vivo Glucose-Stimulated Insulin Secretion (GSIS)**
- **Pancreatic Islet Isolation**
  - Ex vivo GSIS
  - Islet transplant
- **Explant adipose tissue glucose uptake ( $[3-^3\text{H}]\text{-2-Deoxy-D-glucose}$ )**
  - iWAT
  - eWAT / gWAT
  - Brown Adipose tissue
- **Mouse primary cell isolation**
  - Hepatocyte
  - Adipocyte
  - $[^{14}\text{C}]\text{-Palmitate}$  oxidation assay with ex vivo tissue or homogenate (crude or mitochondrial)
- **Hyperinsulinemic-Euglycemic Clamp / Hypoglycemic Clamp / Hyperglycemic Clamp**
  - Glucose infusion rate (GIR)
  - Glucose disposal rate (Rd)
  - Tissue-specific (2-Deoxy-D-glucose) uptake (Rg)
  - Hepatic glucose production (Endo Ra)
  - Tissue-specific Glycogen synthesis
  - Plasma insulin and NEFA (basal vs. clamped)
  - Insulin signaling via Western Blot from tissues snap-frozen at clamp termination

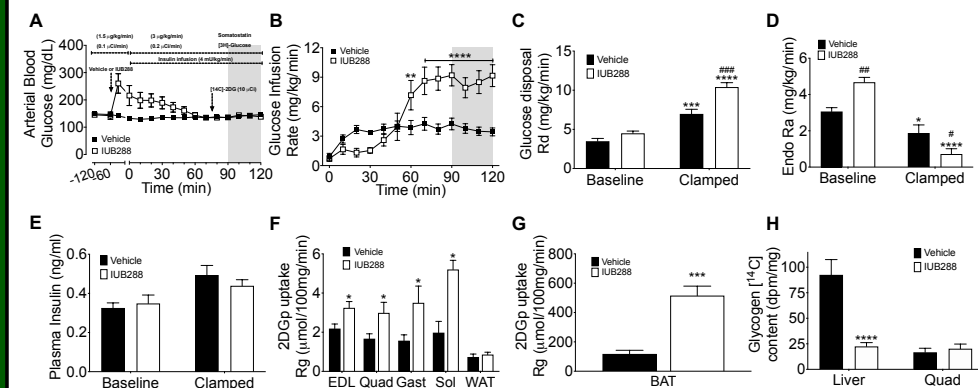


Figure 3. Blood glucose (A), GIR (B), glucose disposal (C), endogenous glucose production (D), plasma insulin (E), glucose uptake (F-G), and glycogen (H). Representative data from tracer-based hyperinsulinemic-euglycemic clamp with somatostatin-blockade of endogenous insulin secretion (Kim et al. *Diabetes* 2018).

## References

1. Teayoun Kim et al. Hepatic glucagon receptor signaling enhances insulin-stimulated glucose disposal in rodents. *Diabetes* 2018 Nov;17:28-38. PMID:30150304
2. Julio E. Ayala et al. Considerations in the design of hyperinsulinemic-euglycemic clamp in the conscious mouse. *Diabetes* 2006 Feb;55(2):390-7. PMID:16443772
3. David H. Wasserman et al. Lost in Translation. *Diabetes* 2009 Sep;58(9):1947-50
4. Julio E. Ayala et al. Hyperinsulinemic-euglycemic clamps in conscious, unrestrained mice. *J Vis Exp.* 2011 Nov 16;(57). PMID:22126863
5. Curtis C. Hughey et al. Hyperinsulinemic-euglycemic clamp in the conscious rat. *J Vis Exp.* 2011 Feb 7;(48). PMID: 21339723