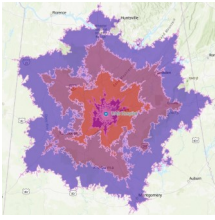
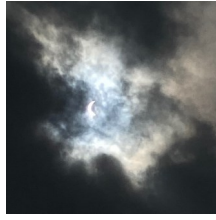


A newsletter brought to you by the UAB Social Determinants of Health (SDH)



[Issues Selecting the Appropriate Geographic Unit of Analysis](#)

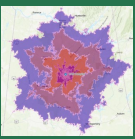


[Mapping the Eclipse](#)



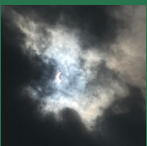
[UAB SDH Core Services](#)

Issues Selecting Appropriate Geographic Unit Analysis



As the utilization of spatially referenced data in epidemiological analysis continues to expand, concerns regarding the selection of suitable geographic units for analysis are increasing. Among these units, ZIP codes stand out as particularly problematic. The lack of standardization and constantly evolving structure of ZIP codes and ZIP Code Tabulation Areas (ZCTAs) pose significant challenges for researchers employing them in spatial analysis. This paper delves into the issues associated with using ZIP Codes/ZCTAs for detecting spatial disease patterns. <https://ijhealthgeographics.biomedcentral.com/articles/10.1186/1476-072X-5-58>

Mapping the Eclipse



For centuries, solar eclipses have held humans spellbound. On April 8, 2024, a total solar eclipse covered a portion of North America in darkness. In a mesmerizing cosmic ballet, the Moon gracefully obscured the Sun. Regions from Mexico to Canada experienced a temporary twilight, captivating observers along its celestial route. You can see the path of the solar eclipse here: <https://storymaps.arcgis.com/stories/7d0e4cef5044ecfaa54f44ac61de81e>

UAB SDH Core



The Social Determinants of Health (SDH) Core enables UAB investigators to measure the effect of social and environmental risks for disease etiology, progression, management, and outcomes. Our services facilitate innovative investigations of genome-sociome-exposome pathways to health and disease through integrated data, methodologies, and expertise from social science, spatial and environmental science, clinical and translational science, genomics, informatics, and epidemiology.

We work to advance research on the impact of Social Determinants of Health, supporting research teams as they consider the circumstances in which people are born, live, work, and age. [Social Determinants of Health \(SDH\) - Minority Health & Health Equity Research Center \(uab.edu\)](https://www.uab.edu/research/centers-and-institutes/social-determinants-of-health-minority-health-and-health-equity-research-center)

CONTACT US:

UAB SDH Core
jrledvina@uabmc.edu
205.975.7852