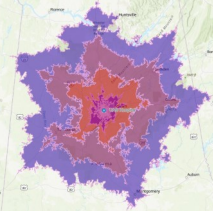


UAB SDH CORE

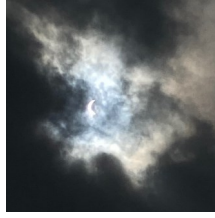
A newsletter brought to you by the UAB Social Determinants of Health (SDH) Core

05.01.2024

Use of Geospatial Analysis



[Issues Selecting the Appropriate Geographic Unit of Analysis](#)

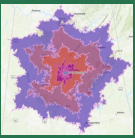


[Mapping the Eclipse](#)



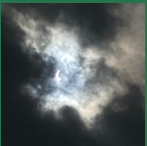
[UAB SDH Core Services](#)

Issues Selecting Appropriate Geographic Unit Analysis



As the utilization of spatially referenced data in epidemiological analysis continues to expand, concerns regarding the selection of suitable geographic units for analysis are also becoming apparent. Among these units, ZIP codes stand out as particularly problematic. Their lack of standardization and constantly evolving structure pose significant challenges for researchers employing ZIP codes and ZIP Code Tabulation Areas (ZCTAs) in spatial disease analysis. This paper delves into the issues associated with utilizing these units for detecting spatial disease patterns. More Information: <https://ijhealthgeographics.biomedcentral.com/articles/10.1186/1476-072X-5-58>

Mapping the Eclipse



For centuries, solar eclipses have held humans spellbound with their celestial spectacle. On April 8, 2024, a total solar eclipse covered a portion of North America in darkness. In a mesmerizing cosmic ballet, the Moon gracefully obscured the Sun, regions from Mexico to Canada experienced a temporary twilight, captivating observers along its celestial route. More information: <https://storymaps.arcgis.com/stories/7d0e4cef5044ecfaa54f44ac61de81e>

UAB SDH Core



The Social Determinants of Health (SDH) Core enables UAB investigators to measure the effect of social and environmental risks for disease etiology, progression, management, and outcomes, and test interventions that ameliorate their effect. Our services facilitate innovative investigations of genome-sociome-exposome pathways to health and disease through integrated data, methodologies, and expertise from social science, spatial and environmental science, clinical and translational science, genomics, informatics, and epidemiology.

Our Core works to advance research on the impact of Social Determinants of Health, working with teams as they consider the circumstances in which people are born, live, work, and age. More information: [Social Determinants of Health \(SDH\) - Minority Health & Health Equity Research Center \(uab.edu\)](#)

CONTACT US:

UAB SDH Core
jrledvina@uabmc.edu
205.975.7852