

2017 UAB Perinatal Conference

Air Goes In and Out Blood Goes Round and Round

August 4, 2017
Bradley Lecture Center
Birmingham, AL



UAB MEDICINE
NEONATOLOGY



Children's
of Alabama

OBJECTIVES

Upon completion of this live activity, participants will be able to:

- Discuss the cause of RDS
- List the signs of RDS
- Describe the management of RDS
- Discuss the outcome of RDS
- Discuss the pathophysiology of BPD
- List the various treatments used in the management of BPD
- Outline the complications of BPD and their management
- Present possible future therapies for BPD
- List the various other respiratory diseases commonly seen in neonates
- Discuss management strategies for these conditions
- Discuss the outcomes of these conditions
- Discuss how to display oxygen saturation histograms on monitors that can produce them
- Explain how to interpret the histograms in order to adjust oxygen supplementation to maintain desired oxygen saturation ranges
- Discuss the various types of ventilators available for use with infants
- Outline the various ventilation strategies used in infants
- List the types of patients most likely to benefit from each ventilation strategy
- Recognize the initial signs of CHD in a neonate.
- Discuss the more common types of CHD
- Select which assessments and tests to order to diagnose CHD
- Assess the initial management of an infant suspected or proven to have a congenital heart lesion
- Discuss the various approaches to repair of important congenital heart lesions
- Outline outcomes for infants with congenital heart lesions
- Discuss pre and post-operative care for infants with CHD
- Explain the pathophysiology of PDA
- Discuss the diagnosis of PDA
- List the various options for management of PDA
- Discuss the potential complications resulting from a persistent PDA
- Discuss the various interventional strategies available for use in neonates with CHD
- List the conditions that are or may in the future be amenable to intervention
- Discuss possible future interventions that may become available
- Describe what ECMO is
- List the criteria for ECMO
- List the different types of conditions where ECMO may be helpful
- Explain how to refer a patient to an ECMO center

AGENDA

7:30a – 8:00a	Registration and Continental Breakfast
8:00a – 8:05a	Welcome Joseph Philips, M.D.; Tara McNair, R.N., B.S.N.
8:05a – 9:05a	Respiratory Distress Syndrome Joseph Philips, M.D.
9:05a – 10:05a	Bronchopulmonary Dysplasia Trent Tipple, M.D.
10:05a – 10:15a	Break
10:15a – 10:45a	Other Respiratory Diseases George El-Ferzli, M.D.
10:45a – 11:15a	Oxygen Saturation Histograms Samuel Gentle, M.D.
11:15a – 12:00p	Ventilators Tim Coghill, M.D.
12:00p – 1:00p	Lunch (provided)
1:00p – 2:00p	Common Congenital Heart Lesions Robb Romp, M.D.
2:00p – 3:00p	Repair of Congenital Heart Lesions Robert Dabal, M.D.
3:00p – 3:15p	Break
3:15p – 4:00p	Patent Ductus Arteriosus Joseph Philips, M.D.
4:00p – 4:30p	Interventional Cardiology in the Newborn Mark Law, M.D.
4:30p – 5:00p	ECMO Debbie Laney, C.R.N.P.
5:00p	Evaluation and Adjournment

The meeting room is usually cold when first entering. It is difficult to maintain a constant temperature that meets the need of each individual participant. For your comfort, we suggest that a jacket, sweater, or sweatshirt be worn.

SPEAKERS

Tim Coghill, M.D.

Professor
NICU Medical Director, Children's of
Alabama
Medical Director, Community Programs

Robert J. Dabal, M.D.

Associate Professor
Chief, Pediatric Cardiac Surgery
Department of Cardiovascular Surgery

George Ferzli, M.D.

Assistant Professor
Director, BPH/PH Program
Division of Neonatology

Sam Gentle, M.D.

Fellow
Division of Neonatology

Debbie J. Laney, C.R.N.P.

ECMO Coordinator & NNP for
Pediatric Surgery Service
Research Nurse Coordinator
Division of Neonatology

Mark A. Law, M.D.

Associate Professor
Section of Pediatric Cardiology

Joseph B. Philips, III, M.D.

Professor
Director, PPHN Program
Division of Neonatology

Robb L. Romp, M.D.

Associate Professor
Division of Pediatric Cardiology

Trent E. Tipple, M.D.

Associate Professor
Director, Neonatology Faculty Development
Division of Neonatology

ACCREDITATION

Children's of Alabama designates this live activity for a maximum of 7.5 *AMA PRA Category 1 Credit™*. Physicians should claim only the credit commensurate with the extent of their participation in the activity.

Children's of Alabama is accredited by the Medical Association of the State of Alabama to provide continuing medical education for physicians.

No application to the Alabama Board of Nursing has been made. Per Alabama Administration Code Chapter 610 -X-10-.04e, *AMA PRA Category 1 Credits™* are acceptable for CEUs. CME conversion to CEUs for this conference equals 9 Continuing Education Hours. To receive the Nursing Contact Hours, go to the Alabama Board of Nursing website: www.abn.alabama.gov

- Click on Continuing Education (on the gray bar in purple letters)
- Click on Access Individual CE Record
- When the Individual CE Record page opens, follow the directions on the screen.

All participants will receive a Certificate of Attendance showing the total number of Contact Hours received.

COORDINATORS

Joseph B. Philips, III, MD
Tara McNair, RN, BSN
Cassandra Hudson
chudson@peds.uab.edu
(205) 934-4680 office
(205) 934-3100 fax

EXHIBITORS

Exhibits will be displayed outside of the lecture/meeting room, in the lobby of the Bradley Lecture Center.

DIRECTIONS

Parking will be available in the 5th Avenue Parking Deck. Take a ticket upon entering the deck. Parking on the 2nd Floor of the deck is for Patients/Visitors Only. **Bring your ticket with you to the Conference. The ticket must be validated or there will be a \$25 charge to exit the deck.** Take the elevator in the center of the deck to the 2nd Floor. Take the crosswalk into the Children's Hospital. Follow the hallway to the right of the information desk. You will cross another crosswalk into the Bradley Center. Take those elevators to the 4th Floor.

DIRECTIONS to the 5th Avenue Parking Deck (1600 5th Avenue South). If you are not familiar with the Birmingham area, the streets run north and south, while avenues run east west. For example, the back of parking deck faces 5th Avenue South, and is located between 16th and 17th Street South.

From the West on I-20/I-59
Take I-65 South, bearing to the right at the major junction before reaching Birmingham. Exit I-65 at the 4th Ave South Exit. You will be traveling East on 4th Avenue South. Turn right onto 16th Street South. The parking deck entrance will be on your left at the corner of 5th Avenue and 16th Street South.

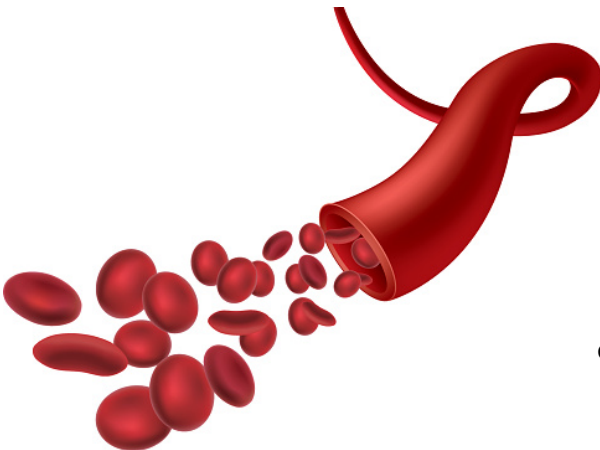
From the North on I-65
Exit I-65 at the 4th Avenue South. You will be traveling East on 4th Avenue South. Turn right onto 16th Street South. The parking deck entrance will be on your left at the corner of 5th Avenue and 16th Street South.

From the East on I-20/I-59
Take I-20/I-59 West into Birmingham. After the 22nd Street North Exit in Downtown Birmingham, get into the far left-hand lane. Bear left onto I-65 South Exit. Exit I-65 at the 4th Avenue Exit. You will be traveling East on 4th Avenue South. Turn right onto 16th Street South. The parking deck entrance will be on your left at the corner of 5th Avenue and 16th Street South.

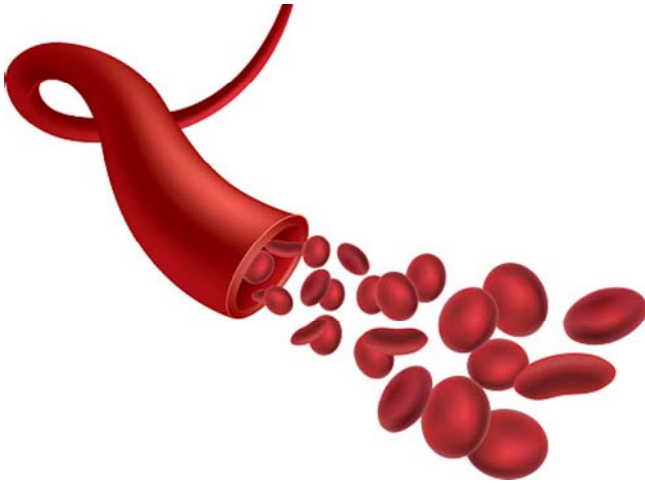
From the South on I-65
Take the University Boulevard/8th Avenue South Exit. You will be going East on University Boulevard. Turn left onto 11th Street South. Turn right onto 5th Avenue South. Building is first left after McDonald's.

From the East on U.S. 280
Take Highway 280 to Highway 31 North to Birmingham (also called the Elton B. Stephens "Red Mountain" Expressway). Exit at 3rd/4th Avenue South exit. Take a left onto 3rd Avenue South. You will be traveling west on 3rd Avenue South. Turn left onto 16th Street South.

Enter the deck on either the 16th or 17th Street entrance



Department of Pediatrics
Division of Neonatology
Women and Infants Center
176F Suite 9380
619 South 19th Street
Birmingham, AL 35249-7335



Registration Form August 4, 2017

PLEASE REGISTER IN ADVANCE BY COMPLETING THIS ENROLLMENT FORM.
MAIL REGISTRATION FORM AND FEE TO ADDRESS BELOW OR FAX IT TO (205) 934-3100.
REGISTER EARLY, SEATING IS LIMITED

Please type or print legibly

Name: _____ Degree (MD, RN, RT, etc.) _____

Hospital/Practice _____ Email address: _____

Mailing Address _____ City _____ State/Zip _____

Office # _____ Home/Cell #: _____ Fax # _____

(Confirmation will be sent via e-mail or Fax ONLY)

Course fee:

- **\$75 (includes handouts, breakfast, lunch and breaks)**

*For more information contact Cassandra Hudson at UAB Neonatology,
(205) 934-4680 or chudson@peds.uab.edu*

Make check payable to **UAB Neonatology** and mail to:

ATTN: Perinatal Conference
UAB Division of Neonatology
176F Suite 9380
619 South 19th Street
Birmingham, AL 35249-7335