

**2017 - 2018**

# **UAB Pediatric Emergency Medicine**

## **Fellowship Program Information Booklet**





## Welcome!

- We're very glad you're here! Thank you for your interest in our Fellowship Program.
- Throughout this booklet, we hope you'll find beneficial information that will help in your fellowship decision.
- If there is something you would like to know that is not included, please email or call us:

- Ann Klasner  
aklasner@peds.uab.edu



- Terri Coco  
tcoco@peds.uab.edu



- Brittany Appelboom  
bappelboom@peds.uab.edu  
205-638-6557  
(Contact person)



**UAB Pediatric Emergency  
Medicine 2017-2018**

**Table of Contents**

Welcome .....	1
Table of Contents .....	2
UAB Pediatrics by the Numbers .....	3
Birmingham by the Numbers .....	4
Where Fellows Live .....	5
Birmingham Attractions .....	6
Birmingham Websites .....	7-8
Fellows' Biographies .....	9-10
UAB Pediatric Emergency Medicine Fellowship Website .....	11
Schedule of Rotations .....	12
Conference Schedule .....	13
Conference Schedule Example .....	14
Other Fellowship Responsibilities/Activities .....	15
Pediatric Research Projects List .....	16
Alumni List .....	17-18
UAB Department of Pediatrics Faculty .....	19-20
Policies and Procedures .....	21
Initial Resident Agreement .....	22
Salary and Benefits .....	23
Benefits Overview .....	24
Fellows' List of Favorite Things .....	25



## ***UAB Pediatrics by the Numbers***

69,931	—	Number of Visits to Emergency Medicine in 2015
8,949	—	Inpatient Admissions in 2015 (COA)
380	—	Licensed beds (COA)
48	—	NICU bassinets
192	—	Daily Average Census 2015 (COA)
208	—	Pediatric Medical Faculty Members
22	—	Pediatric Emergency Medicine Faculty Members
9	—	Pediatric Emergency Medicine Fellows
66	—	Pediatric House Staff
28	—	Scheduled Vacation Days
Top 50	—	2016 U.S. News & World Report Ranking
16	—	Med/Peds House Staff
Top 20	—	Pediatric Departments in funding by NIH
760,000 sf	—	The largest single medical facility expansion project in the history of Alabama



## ***Birmingham by the Numbers***

- 2 — Average annual snowfall in inches
- 23 — Metro hospitals
- 15-20 — Average number of minutes to commute to work
- 17 — Public Golf Courses
- 23 — State Parks
- 50+ — Shopping Centers
- 62 — Average temperature in degrees F
- 96 — Antique malls and galleries
- 117 — Days of precipitation
- 147 — Miles from Birmingham to Atlanta, GA
- 192 — Miles from Birmingham to Nashville
- 210 — Miles from Birmingham to Destin, FL (The Beach)
- 500+ — Restaurants
- 820 — Median rent for 2 bedroom apartment



### Where Fellows Live





## ***Birmingham Attractions***

- SEC Headquarters
- Civil Rights Institute
- DeSoto Caverns
- Oak Mountain State Park
- Barber Motorsports Park
- Workplay Music Theater
- Alabama Sports Hall of Fame
- Birmingham Museum of Art
- McWane Center
- IMAX Theater
- Old Car Heaven
- Birmingham Zoo & Botanical Gardens
- Pepper Place Farmers Market
- Sidewalk Moving Picture Festival
- Birmingham Business Alliance
- Greater Birmingham Convention & Visitors Bureau
- Regions Field (Birmingham Baseball Stadium)
- Iron City Music Venue and Grill
- Alabama Adventure
- Regions Tradition Golf Tournament
- Do Dah Day Festival
- Railroad Park
- Birmingham Barons Baseball Team-Chicago White Sox AA minor league affiliate
- Birmingham Broadway Series
- The Alabama Theater
- Stardome Comedy Club
- Vulcan - Roman mythical god of the forge (tallest cast iron statue in the world)
- Vulcan Aftertunes
- Verizon Wireless Music Center
- Rickwood Field - world's oldest ballpark
- Talladega Super Speedway



## **Birmingham Websites**

<http://birminghamal.org/> - Website of Greater Birmingham Tourism & Conventions with links to area attractions, events and much more. Also has an app called INBirmingham

<http://www.thingstodoinbirminghamal.com/> - This website has everything to do in Birmingham on any given day.

<http://www.birmingham365.org/> - Everything there is to do in Birmingham including festivals, theatre, music, classes, and sports.

<http://www.alabamatheatre.com/> - Historic Alabama theatre where many performances and movies are shown throughout the year including *Rocky Horror Picture Show* Movie and Costume Party and several Holiday movies shown such as *It's a Wonderful Life* and *Miracle on 34<sup>th</sup> Street*.

<http://www.uab.edu/uabmagazine/> - UAB magazine, also has an app for your IPAD called UAB magazine

<http://www.uab.edu/medicine/magazine/> - UAB's School of Medicine, a magazine devoted to UAB research in the medical community.

[www.artsbma.org](http://www.artsbma.org) - Birmingham Museum of Art- great events like Art on the Rocks and exhibitions including *Warhol and Cars* and *Who Shot Rock and Roll*.

[www.bcri.org](http://www.bcri.org) - Birmingham Civil Rights Institute

<http://www.workplay.com/> - Cool venue for several bands

<http://www.barbermuseum.org/> - Barber Vintage Motorsport Museum, home of the best motorcycle collection with over 1200 motorcycles and race cars on display.

<http://www.pepperplacemarket.com/> - Saturdays - Fresh fruits and vegetables market

<http://www.ironcitybham.com/> - Restaurant and music venue





## **Birmingham Websites**

<http://alysstephens.uab.edu/> - Alys Stephens Performing Art Center with several performances throughout the year. This year's schedule included Anthony Bourdain, Mass Collective, Ledisi, Eric Benet, Martin Short, and the Alabama Orchestra Symphony.

<http://www.mcwane.org/> - McWane Science Center- local science museum with an IMAX theater offers several hands on activities and camps for children.

<http://www.alabamaballet.org/>- Alabama Ballet Company - local ballet with several performances throughout the year including *The Sleeping Beauty* and George Balanchine's *The Nutcracker*.

<http://railroadpark.org/> - Railroad Park, located on 1<sup>st</sup> Avenue South between 14<sup>th</sup> and 18<sup>th</sup> Streets, is venue that offers recreation and several activities.

[www.barons.com](http://www.barons.com) Birmingham Barons, our minor league baseball team which is an AA affiliate of the Chicago White Sox.

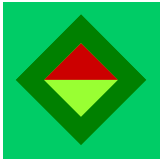
[www.bjcc.org](http://www.bjcc.org) Birmingham Jefferson Convention Complex holds several events and concerts including Jay-Z, Disney on Ice, Chris Tomlin, Birmingham Home and Garden Show, and America's Got Talent Live tour.

<http://www.southernmuseumofflight.org/> Southern Museum of Flight is one of the largest aviation museums in the Southeast, is dedicated to presenting civilian, military, and experimental aircraft and memorabilia from the earliest history of powered flight.

<http://ashof.org> Alabama Sports Hall of Fame and Museum holds over 5,000 sports artifacts

[www.rickwood.com](http://www.rickwood.com) Rickwood Field is America's oldest ballpark. Portions of the movie '42', was filmed here.

[www.visitvulcan.com](http://www.visitvulcan.com) Vulcan Park and Museum. Vulcan is the world's largest cast iron statute.



## 2017 Pediatric Emergency Medicine Fellows



**Kathleen Richard, MD**—I was born and raised in New York, but over the last 10+ years, I have made a slow migration to better weather! While most of my family is still in the Northeast, when I met my husband, Glen in med school at Wake Forest, I agreed to marry him on the condition that he not take me back to a location where several feet of snow is the norm. When I'm not working, I love to run, cook, or do anything outdoors.

**Josh Haupt, MD**—I was born in Chicago, but grew up in Ft. Myers, FL. I went to UCF for undergrad where I met my wife, and we continued on together where she completed vet school and I med school at St. George's. We have one son, Connor, and have been having a ball with him while learning the side of pediatric that is not in the textbooks. We enjoy anything outdoors: hiking, kayaking, camping, hockey, cooking, restaurant hopping and live music.



**Todd Fleenor, MD**— I'm originally from the hills of Franklin, TN where I grew up the oldest of 4. For the first 2 years of med school, I lived on the island of St. Martin before spending my 3rd and 4th years of med school in Long Island, NY and Detroit, MI before coming to UAB for Peds residency where I fell in love with Peds EM. I love traveling to new places and discovering new people and cultures, so when I'm not working, you'll find me traveling (my favorite places are Northern Ireland and Austria.) I also enjoy hiking, working in my garden, and taste testing Birmingham's food and craft beer.

**Shaundra Blakemore, MD**- I was born and raised in Birmingham and went to Ramsay High School (Go Rams!). In high school, I was a volunteer at Children's and always knew I would eventually work here, though I took a little different route to my dream. I applied to Yale for college on a lark and actually go in, so of course I went! While I loved it there, I did NOT love the weather so after college I decided to live in tropical Singapore for a year and teach physiology. I took advantage of Singapore's many holidays to backpack through Southeast Asia. Then I returned where I started—back to Birmingham for med school.



**Jacinta Cooper, MD, PhD**- I was born in Atlanta, but raised in Colorado. I met my husband at the House of Blues in New Orleans while at Xavier University of Louisiana for undergrad. I moved back home to Colorado for medical and graduate school. Since moving to Cincinnati for residency I have become a runner and completed four half marathons. I enjoy yoga and working out and love styles of dance. My current favorite is called Dancefix. I know I'm moving to SEC country, but my favorite sports are gymnastics, cheerleading, figure skating, and NASCAR.

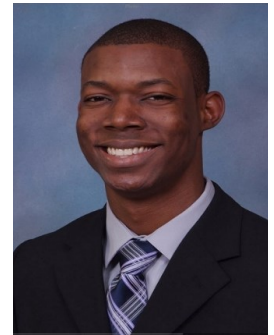
**2017 Pediatric Emergency Medicine Fellows** *cont'd*

**Jennifer Smedley, MD-** I grew up in the panhandle of Florida in a small town called Niceville. It is about 20 minutes from the Destin beaches and this where I spent most of my summers. I moved to Orlando for undergrad to attend UCF and then moved farther south to Sarasota for medical school. Despite staying in Florida for so long I have always wanted to get out. I guess going to residency in Columbia, SC was the first step. I really enjoy being outdoors especially in the mountains. I love hiking, camping, and kayaking. I am also very into yoga and hope to start doing some mediation soon.



**Erika Bishop, MD-** I was born and raised in the small town of Greenwood, SC. I started playing soccer in my early years which afforded me the ability to do so at Wofford College. Go Terriers!! I stayed in state but traveled to the coast for medical school which I completed at the Medical University of South Carolina in Charleston. (Yes, it is all it is cracked up to be. Go visit now!) Then I ventured to the Ham for residency where I fell in love with the city, the pediatric program and its people. Despite initially being led astray in thinking I would sub-specialize in GI, I finally saw the light and converted to the good side (or dark depending on who you ask!). I am excited to become part of the PEM family!

**Samuel Strachan, MD-** I was born in Nassau, Bahamas and moved state side for undergrad in South Carolina when I was 17. After finishing undergrad in Columbia I migrated over to Birmingham for med school and have stayed here ever since. I met my wife Ashton, who is an NP at the UAB student health center, while in med school. Ashton and I love to spend our time traveling and experiencing new cultures. I'm really excited to start fellowship and finally be a PEM doc!



**Laura Rochford, MD-** I grew up in northern Virginia. Since then I've lived in TN, NY and most recently OH. I'm very excited about moving to Birmingham! My family lives in Knoxville, TN and they are happy that I will be a true southerner again. In fact, they have informed me that now that I am half-way to Destin, they will be visiting me much more often. I've heard amazing things about COA and I share your passion for emergency medicine and taking care of sick kids. When I am not at work I am most happy on a mountain bike. I also have a charming and energetic boxer, Franklin (named after my favorite founding father). I feel very lucky to get the opportunity to be a fellow at COA!



**Emergency  
Medicine  
Webpage**



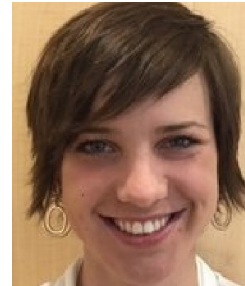
**Emergency Medicine Fellowship**



Erika Bishop, MD



Samuel Strachan, MD



Laura Rochford, MD

The Pediatric Emergency Medicine (PEM) fellowship program at the University of Alabama at Birmingham (UAB) began its thirty third year in 2017. Our PEM program was accredited through the American Board of Pediatrics in the fall of 1999. We were last accredited in 2011 and our next visit is set for 2019. Since 1995, we have been dedicated to educating our fellows based on a three year model. The aims of our fellowship program are:

1. To provide a three year curriculum that trains individuals in all aspects of pediatric emergency medicine, including key procedures.
2. Gain broad knowledge and skills in common and uncommon pediatric emergencies as well as gain exposure to adult emergencies.
3. To produce physicians with skills in research and quality improvement strategies to allow them to support ongoing efforts in the field.

To achieve these aims, we emphasize the six core competencies (patient care, medical knowledge, practice based learning, interpersonal skills, professionalism, and systems based practice) and their accompanying 23 PEM specific sub-competencies and milestones. These will be addressed through a variety of activities as described in each of the above sections.

We are a division of the UAB Department of Pediatrics. Currently, there are over 170 full-time faculty in general pediatrics and the subspecialty divisions. The Department of Pediatrics is responsible for more than 160,000 outpatient visits, including over 69,000 emergency department visits. General pediatric and subspecialty faculty manage more than 9,800 inpatient admissions per year. Total inpatient days are in excess of 78,000. The Department of Pediatrics has a major commitment to research and consistently ranks in the top 20 among all departments of pediatrics in the country in NIH funding. The Pediatric Residency Program consistently has a pass rate near 100% for both pediatrics and med peds. Only 16 of 200 (8%) US Pediatric Residency Training Programs have pass rates of 95% or higher. Seven of Children's of Alabama's pediatric specialty services were placed among the top programs in the United States by *U.S. News and World Report* in their 2015 ranking of The Best Children's Hospitals. The goals of our fellowship program emphasize the six core competencies, patient care, medical knowledge, practice based learning, interpersonal skills, professionalism, and systems based practice. They will be accomplished through a variety of activities as described in each section - Clinical, Teaching, Research and Administrative.

<http://medicine.uab.edu/Peds/em/>



## Schedule of Rotations

Below is a skeleton outline of the monthly rotations required for our Pediatric Emergency Medicine fellowship (arranged in no particular order). We strive to be flexible with our scheduling so that we can meet the interests and needs of our fellows.

Year One	Year Two (+ Biostats)	Year Three (+ Epidemiology)
Orientation/ED	*Research	*Research
*Adult ED	Research	*Research
Anesthesia	Research	Research
Selective	Research	Research
Toxicology	*Adult ED	Research
*Pediatric Critical Care	ED!	*Adult ED
*Trauma	ED!	ED!
ED	ED	ED!
ED	ED	ED
ED	ED	ED
ED	ED	ED
ED	ED	ED

ED/research: 75% ED; 25% research \*Elective/Research: 50% Research

Note: A significant number of electives in the second and third years should be dedicated to research.

\*No Pediatric ED call

! Concentrated ED time 16 shifts/month

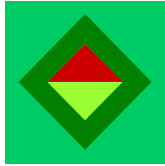
Must complete one orthopedics month and two weeks each of Abuse and EMS.

### Suggested Electives:

(Electives may be taken during ED months or rotations may be arranged for two to four weeks during elective months.)

Adolescent  
 Burns  
 Child Abuse (physical and sexual)  
 Dermatology  
 Obstetrics  
 Otolaryngology  
 Plastic Surgery  
 Procedure month  
 Research  
 Simulation  
 Surgery  
 Orthopedics  
 Ultrasound

Administrative  
 Cardiology  
 Dentistry  
 Gynecology  
 Ophthalmology  
 Pediatric Critical Care  
 Pre-hospital Care (EMS)  
 Radiology  
 Sedation  
 Sports Medicine  
 Transport  
 International



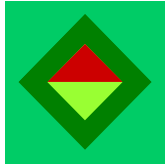
## Conference Schedule

Below is a skeleton outline of the monthly conferences for the Pediatric Emergency Medicine department. Conferences are held every Thursday morning. Fellows are also welcome to attend conferences held by other pediatric divisions at the University of Alabama at Birmingham.

	<b>Week 1</b>	<b>Week 2</b>	<b>Week 3</b>	<b>Week 4</b>	<b>Week 5</b>
<b>7:00</b>	<b>Res lecture</b>	<b>Res lecture</b>	<b>Res lecture</b>	<b>Res lecture</b>	<b>Res lecture</b>
<b>8:00</b>	<b>Fellow EBM</b>	<b>Combined Hospitalist</b>	<b>Faculty EBM</b>	<b>Guest Lecture</b>	<b>Research Lecture</b>
<b>9:00</b>	<b>Interesting Case</b>	<b>Toxicology</b>	<b>Procedures</b>	<b>Fellow Meeting</b>	<b>SOC</b>
<b>10:00</b>	<b>PEM Reports</b>	<b>Journal Club</b>	<b>Procedures</b>	<b>US/ Patient Safety</b>	<b>SOC</b>
<b>11:00</b>	<b>Board Prep</b>	<b>PICU/ED/PHM</b>	<b>Procedures</b>	<b>Radiology</b>	<b>M &amp; M</b>
<b>12:00</b>	<b>Grand Rounds</b>	<b>Grand Rounds</b>	<b>Grand Rounds</b>	<b>Grand Rounds</b>	<b>Grand Rounds</b>

### Other Pediatric Fellowship Program at UAB:

Adolescent Medicine	Infectious Diseases
Allergy/Immunology	Internal Medicine/Pediatrics
Cardiology	Neonatal-Perinatal Pediatrics
Child Neurology	Nephrology
Critical Care Medicine	Pulmonary
CVICU	Rheumatology
Endocrinology	Sleep Medicine
Gastroenterology	Surgery
Hematology/Oncology	
Hospice/Palliative Care	
Hospital Medicine	



## Conference Schedule Example

### Fellow Conference Schedule

**June 2017**

(Scheduler: Jennifer Smedley)

<u>Date</u>	<u>Time</u>	<u>Presenter</u>	<u>Topic</u>
June 1	7:00	Steve Baldwin	Resident Lecture
	8:00	Jennifer Smedley	Fellow EBM
	9:00	Pallavi Ghosh	Interesting Case
	10:00	David Bernard	PEM Practice
	11:00	Valerie Davis	Board Prep
	12:00		Grand Rounds
June 8	7:00	Todd Fleenor	Resident Lecture
	8:00	Katy Hines	Combined PHM/ED
	9:00	Michele Nichols	Toxicology Topic
	10:00	C. Pruitt, Jennifer	Journal Club
	11:00	Christy Bemrich-Stolz	Combined PICU/ED/PHM – Blood Products
	12:00		Grand Rounds
June 15	7:00	Annalise Sorrentino	Mock Trauma/Resident Sim**
	8:00	William Geisler	Guest Lecture- Mycoplasma Genitalium Infections
	9:00		Simulation – Codes/Teamwork/CRM refresher
	10:00		Simulation
	11:00		Simulation
	12:00		Grand Rounds
June 22	7:00	Jennifer Smedley	Resident Lecture
	8:00	Joy Dean	Guest Lecture- Genetics
	9:00	Ann Klasner	Fellow Meeting
	10:00	Mark Baker	Ultrasound – Vascular procedures
	11:00	Jennifer Smedley	Radiology Rounds
	12:00		Grand Rounds
June 29	7:00	Josh Haupt	Resident Lecture
	8:00		---Fellows Breakfast---
	8:30	Katherine H. Smith	Research Lecture
	9:00	P. Glaeser, C. Pruitt	SOC – Jacinta
	10:00	P. Glaeser, C. Pruitt	SOC – Jennifer
	11:00	P. Glaeser, C. Pruitt	SOC – Josh, Kathleen

\*PICU conference room

\*\*Trauma/Resus Bay

All resident lectures in ED conference room unless otherwise specified

All book review chapters refer to Fleischer and Ludwig 6<sup>th</sup> Edition

Revised: 5-3-16

Off service: Shaundra Blakemore



## **Other Fellowship Responsibilities/Activities**

### **Conferences to Attend:**

Dedicated Fellows' Education Day: Thursdays 0800 - 1200

- Includes:
- Guest Lectures (invited speakers) (1-2 times per month)
  - Evidence Based Medicine Conference (2 times per month)
  - Book Review (weekly)
  - Fellows' Meeting (monthly)
  - Interesting Case Conference (monthly)
  - Toxicology (monthly)
  - Fellows' Research (four times a year)
  - Radiology Conference (monthly)
  - PICU/PEM Conference (monthly)
  - PEM Journal Club (monthly)
  - Board Prep (monthly)
  - PEM/PHM Conference (six times a year)
  - Patient Safety Series (four times a year)
  - US Conference (six times a year)

### **Other Available Conferences to Attend:**

- Trauma Conference: Scheduled on Wednesdays at 0800 (morbidity/mortality conference)
- Morning Resident Conference: Thursdays at 0700
- Resident Noon Conference: Monday – Wednesday at 1200
- Pediatric Grand Rounds: Thursdays at 1200 Noon
- Combined Physiology Conference: Thursdays at 0730.

### **Required Conferences to Teach**

- Morning PEM Resident Conference - every other month (new conference every six months)
- Pediatric Emergency Medicine Journal Club
- Combined PHM/PEM Conference (as a second year fellow)
- Toxicology Conference - (prepared during toxicology month)
- EBM (once a year)

*[Additional conferences may be requested as needed]*

### **Required Courses:**

- Pediatric Advanced Life Support (provider, instructor)
- Advanced Trauma Life Support
- Basic Life Support
- Medical Director's Course
- Mini-Quality Academy

### **Other Available Courses:**

- Advanced Cardiac Life Support
- Neonatal Resuscitation Program (neonatal)
- Advanced Pediatric Life Support

### **Academic Courses:**

- |                                      |  |
|--------------------------------------|--|
| UAB School of Public Health courses: | Clinical Research Training Program (20 hrs.)<br>Epidemiology, Biostatistics I & II |
| Recommended courses:                 | Ethics OR other selected courses.  |





## ***A Few of Our Recent and Ongoing Pediatric Research Projects***

- K Richard: Identification of factors that can predict unnecessary hospital transfers
- T Fleenor: Do retained bullet fragments cause elevation of serum lead levels over time in pediatric patients?
- J Haupt: Is the FLAC pain scoring system appropriate for use in the Pediatric ED?
- S Blakemore: Education of Residents and Interns on Travel History Collection
- Buice J: Measuring the potential impact of bedside US on patient outcomes for The management of skin and soft tissue infections
- Lee J: Liquid Nicotine Ingestions National Review vs. Alabama
- Brennard M: Assessment and agreement of triage teaching tool
- Davis V: Pediatric Emergency Medicine Department Asthma Pathway Effect on Length of Stay
- Klasner A: Febrile Sickle Cell Patients, ED Time to Antibiotics
- Pruitt C: Herpes Simplex Virus (HSV) Infection in Young Infants  
  
Concordance of C-Reactive Protein (CRP) and Erythrocyte Sedimentation Rate (ESR) in the Pediatric Emergency Department  
  
The Pediatric Septic Shock Collaborative



## Alumni List

Name	Year	Medical School	Residency Program	Current Position
Robert Plouff, M.D.	1988-1990		Children's Hosp Medical Center of Cincinnati	Assistant Professor Univ of MN
Glenn Faries, M.D.	1989-1991	University of Alberta	McGill University and University of Toronto	Executive Director of A Charitable Organization
William Hardwick, M.D.	1990-1992	UASOM	Children's Hosp Medical Center of Cincinnati	Private Phys. Vestavia Peds
Alice Calhoun, M.D.	1991-1994	UCLA SOM	Stanford University Sch of Med	Assistant Professor Children's Hosp Ctrl CA
Raymond Deeb, M.D.	1991-1994	University of Miami SOM	Univ of CO Health Sci & Univ of CA San Diego & UAB	Pres/CEO Pri Care Phys. Briarcliff Peds
Steven Baldwin, M.D.	1992-1994	Albany Medical College	UAB	Professor UAB
Laura P. James, M.D.	1992-1994	University of SC SOM	University of Arkansas	Assistant Professor Arkansas Children's Hospital
Madeline Joseph, M.D.	1992-1994	Tichreen Univ Lattakia Syria	Univ of Florida Health Science Ctr.	Clinical Professor Univ of FL
Joseph Dobson, M.D.	1993-1994	Emory University SOM	UAB	Associate Professor/Director Med Univ of SC/Mercy Children
Robert Lembersky, M.D.	1993-1995	Pritzker SOM	University of Pittsburgh	Attending Phys. East TN Child Hosp
Kathy Monroe, M.D.	1993-1995	UASOM	UAB	Professor UAB
Sangeeta Chona, M.D.	1994-1996	UASOM	PL1 Washington Univ, PL2 State Univ of NY, PL3 UAB	Director of PEM Simulation, Children's Oakland
Kim Copeland, M.D.	1994-1996	Oregon Health Sciences Univ	Vanderbilt University and UAB	Legacy Health Sys. Portland, OR
Kevin Polley, M.D.	1994-1996	Medical University of SC	Johns Hopkins Hospital	Med. Dir. Children's Emerg Ctr. GHS
Barry Gilmore, M.D.	1995-1998	Univ of Arkansas COM	Univ of AK for Medical Sciences	Associate Prof, LeBonheur Medical Center
Jay Pershad, M.D.	1995-1998	Seth GS Medical School, India	Wayne State University (Michigan)	Associate Professor Univ of TN/Ped Em Spec
Judson Barber, M.D.	1996-1999	UASOM	UAB	Associate Professor UAB
Michelle Embling, M.D.	1996-1999	Medical Univ of SC	UAB	Progressive Medical Associates—NV
Ki Abel, M.D.	1997-2000	University of FL COM	Baylor College of Medicine	Homemaker, Not Practicing PEM
Samuel Bartle, M.D.	1997-2000	University of South AL	University of Tennessee	Assistant Professor VA Commonwealth Univ
Byron Mainor, M.D.	1998-2001	Medical College of Georgia	Med University of South Carolina	PEM Phys. Memorial Heal Univ Med Ctr.
Donald Arnold, M.D.	1999-2002	Emory University SOM	University of Virginia	Associate Professor Vand Univ Sch of Med.
Aleta Bonner, M.D.	1999-2002	Texas AM University	Scott & White Hospital	Assistant Professor Dell Children's Medical Ctr. - Austin
Annalise Sorrentino, M.D.	2000-2003	University of Missouri, KC	UAB and University of Missouri, KC	Associate Professor UAB
David Spiro, M.D.	2000-2003	University of California	University of CO Health Sci Center	Associate Professor Oregon Health and Science Center
James Schmidt, M.D.	2001-2004	University of NC	Carolinas Medical Center	Associate Professor, Children's Hospital of the Kings & Daughters
Terri J. Coco, M.D.	2002-2005	UASOM	UAB	Associate Professor UAB
Dale DuBois, M.D.	2003-2006	Creighton University	Creighton University	Assistant Professor Meth Children's Hospital, Texas
Molly Hasty, M.D.	2003-2006	University of Louisville	UAB	Homemaker, Not Practicing PEM
Laurie Marzullo, M.D.	2003-2006	Albert Einstein	Children's Hospital of Philadelphia	Assistant Professor UAB
Brandon Carr, M.D.	2004-2007	Medical College of Georgia	UAB	Assistant Professor Arnold Palmer Hospital
Jennifer McCain, M.D.	2004-2007	Medical College of Georgia	UAB	Private Practice, Mayfair Associates
Taj Madiwale, M.D.	2004-2007	George Washington Univ	Miami Children's Hospital	Assistant Professor University of Tennessee
Marjorie Lee White, M.D.	2005-2008	UASOM	UAB	Professor, UAB



## Alumni List

Name	Year	Medical School	Residency Program	Current Position
Mark Baker, M.D.	2005-2008	University of Chicago	Emory University	Associate Professor, UAB
Dawn Kendrick, M.D.	2005-2008	East Carolina University	Main Medical Center	Assistant Professor East Carolina Univ.
William Scott Russell, M.D.	2005-2008	Medical College of Georgia	UAB	Associate Professor Medical Univ. of SC
Melissa N. Frascogna, M.D.	2006-2009	Univ. of MS Medical Center	Northwestern University - Chicago	Assistant Professor Blair E. Batson Hospital
Benjamin Jackson, M.D.	2006-2009	Wake Forest University	Medical University of SC COM	Assistant Professor Medical Univ. of SC
Robert Lopus, M.D.	2006-2009	Univ. of Santo Tomas, Philippines	Univ. of Texas Houston	Assistant Professor Univ. of Texas Houston
Christopher Pruitt, M.D.	2007-2010	Med. Univ. of SC SOM	Med. Univ. of SC	Assistant Professor , UAB
Sarah Sterner, M.D.	2007-2010	Medical College of Georgia	St. Christopher's Hospital for Children	Assistant Professor MUSC
Valerie Davis, M.D.	2007-2010	Univ. of Nebraska COM	Univ. of TN	Assistant Professor UAB
Kimberly Gran, M.D.	2008-2011	Medical College of Georgia	Vanderbilt Univ.	Assistant Professor, Vanderbilt
Michael Mitchell, M.D.	2008-2011	Brody SOM at East Carolina Univ.	The Children's Hospital, Denver & Univ. of CO Health Sciences Ctr.,	Assistant Professor WFUBMC
Timothy Galey, M.D.	2008-2011	Saint George's Univ. -Granada	Orlando Regional Medical Center	Assistant Professor WFUBMC
Shruti Kant, M.D.	2009-2012	Grant Medical College	Univ. of Nevada SOM	Assistant Professor, UCSF
Nicole Jones, M.D.	2009-2012	Wake Forest Univ. SOM	Florida State Univ. COM	Assistant Professor, UAB
Kelly Clayton, M.D.	2009-2012	Univ. of Miami SOM	Univ. of Florida COM - Jacksonville	Assistant Professor Joe DiMaggio Children's Hosp.
Elizabeth Yust, M.D.	2010-2013	Indiana University SOM	UAB at Birmingham	Assistant Professor TX Children's Hospital-Baylor
Christopher Restrepo, M.D..	2010-2013	Univ. of South Carolina SOM	Palmetto Health Richland	Assistant Professor Emergency Med. Assoc. of Tampa Bay, LLC
Heather Mitchell, M.D.	2010-2013	UASOM	UAB	Assistant Professor, UAB
Laura Lindsay, M.D.	2011-2014	Univ. of Toledo COM	Medical University of South Carolina	Assistant Professor Dayton Children's Hospital
Worth Barbour, M.D.	2011-2014	Faculty li-Poznan Univ. of Medical Sciences - Poland	K. Hovnanian Children's Hospital Neptune, NJ	Assistant Professor St. Peter's Univ. Children's Hospital - New Jersey
Arianna Shirk, M.D.	2011-2014	Wake Forest Univ. SOM	UAB	Adjunct Asst. Professor, Kijabe, Africa
Pallavi Ghosh, M.D.	2012-2015	Grant Medical College, India	Morehouse School of Medicine,	Assistant Professor, UAB
David Smith, M.D.	2012-2015	Univ. of Florida COM	Univ. of Florida COM	Attending Physician, Baptist Health Med Ctr.—FL
Rami Sunallah, M.D.	2012-2015	University Faculty of Medicine, Egypt	Univ. of Toledo	Attending Physician, Clear Lake Med Ctr—TX
Christine Campbell, MD	2013-2016	UAB	UAB	Assistant Professor, UAB
Shea Duerring, MD	2013-2016	Eastern VA Med. School	Children's Hospital of the King's Daughters	Assistant Professor, UAB
Johanna Hall, MD	2013-2016	American Univ. of the Caribbean	Mercer Memorial Health Univ. Medical Cen- ter	Attending, Children's Hospital Me- morial Health, - GA
Kimberly Massey, MD	2013-2016	Ross Univ. SOM –Dominica	Univ. of Mississippi	Attending, Sacred Heart Children's Hospital—FL
Megan Brennard, MD	2014-2017	UAB	UAB	Attending– Centennial Medical Center
Jonathan Buice, MD	2014-2017	Medical College of Georgia	Carolinas Medical Center	Pediatric Emergency Medicine Associates– Atlanta, GA
James Langston Lee, MD	2014-2017	University of Texas Southwestern Medical Center	University of New Mexico	Attending– Huntsville Hospital



**2017 Medical Faculty UAB Department of Pediatrics  
Mitchell Cohen, MD - Chairman**

**Vice-Chair for Education**  
*Michele Nichols, M.D.*

**Vice-Chair for Research**  
*Richard J. Whitley, M.D.*

**Vice-Chair for Clinical Affairs**  
*Peter Glaeser, M.D.*

**Vice Chair for Clinical and Translational Research**  
*David Kimberlin, M.D.*

**Vice Chair For Outcomes**  
*Smita Bhatia, M.D., MPH*

**ALLERGY and IMMUNOLOGY**

(205-638-9072) 220-CPP

◆**Dr. Prescott Atkinson** Professor  
Dr. Coralie S. Hains Associate Professor  
Dr. Suthida Kankirawatana Assistant Professor

**CARDIOLOGY**

(205-934-3460) 9100-WIC

◆**Dr. Yung R. Lau** Professor  
Dr. Jeffery Alten CVICU Professor  
Dr. Santiago Borasino CVICU Associate Professor  
Dr. Wally F. Carlo Associate Professor  
Dr. Edward V. Colvin Professor  
Dr. Walter H. Johnson Professor  
Dr. Mark Law Associate Professor  
Dr. William S. McMahon Professor  
Dr. F. Bennett Pearce Professor  
Dr. Leslie Rhodes Assistant Professor  
Dr. Robb L. Romp Associate Professor  
Dr. Hayden Zaccangi CVICU Assistant Professor

**CHILD ABUSE**

CPP1

**Michael Taylor** Professor

**CHILD INJURY CONTROL CTR**

(205) 638-6031 Magnolia Bldg 3rd Floor

◆**William D. King, PhD**

**CRITICAL CARE**

(205-638-9387) CPPI Suite 102

◆**Dr. Nancy Tofil** Acting Div. Director  
Dr. Margaret Winkler Professor  
Dr. Mark Buckmaster Associate Professor  
Dr. Leslie Hayes Associate Professor  
Dr. Michele Kong Associate Professor  
Dr. Priya Prabhakaran Associate Professor  
Dr. Chrystal Rutledge Assistant Professor  
Dr. Will Sasser Assistant Professor

**DEVELOPMENTAL PEDIATRICS**

TBA

Dr. Justin Schwartz Assistant Professor

**EMERGENCY MEDICINE**

(205-638-9587) 110-CPP

◆**Dr. Peter Glaeser** Professor  
Dr. Mark Baker Associate Professor  
Dr. Steven T. Baldwin Professor  
Dr. Judson Barber Professor  
Dr. David W. Bernard Assistant Professor  
Dr. Christine Campbell Assistant Professor  
Dr. Christina Cochran Assistant Professor  
Dr. Teresa Coco Associate Professor  
Dr. Catherine Cotney Instructor  
Dr. Valerie Davis Assistant Professor  
Dr. Shea Duerring Assistant Professor  
Dr. Pallavi Ghosh Assistant Professor  
Dr. Terry Hope Instructor  
Dr. Christina Inman Instructor  
Dr. Nicole Jones Assistant Professor  
Dr. Ann Klasner Professor  
Dr. Patricia LaBorde Instructor  
Dr. Florence Lee Instructor  
Dr. Laurie Marzullo Associate Professor  
Dr. Heather Mitchell Assistant Professor  
Dr. Kathy W. Monroe Professor  
Dr. Michele H. Nichols Professor  
Dr. Melissa Peters Associate Professor  
Dr. Christopher Pruitt Assistant Professor  
Dr. Annalise Sorrentino Professor  
Dr. Marjorie Lee White Associate Professor

**ENDOCRINOLOGY**

(205-638-9107) 230-CPP

◆**Dr. Kenneth McCormick** Professor  
Dr. Hussein Abdul-Latif Professor  
Dr. Ambika Ashraf Professor  
\*Dr. Joycelyn Atchison Professor  
Dr. Caroline Colvin Assistant Professor  
Dr. Pallavi Iyer Associate Professor  
Dr. Rose James Instructor  
\*Dr. Gail Mick Professor  
Dr. Mary Lauren Scott Assistant Professor  
Dr. Michael Stalvey Assistant Professor

**GASTROENTEROLOGY/ HEPATOLOGY/ NUTRITION**

(205-638-9918) 618-Lowder

◆**Dr. Reed Dimmitt** Professor  
Margaux Barnes, PhD Assistant Professor  
Dr. David Galloway Assistant Professor  
Dr. Traci Jester Assistant Professor  
Dr. Rachel Kassel Assistant Professor  
Dr. Jeanine Maclin Associate Professor  
Michelle Mastin, PhD Assistant Professor  
Dr. Jose Mestre Professor  
Dr. Janaina Nogueira Assistant Professor

**GENERAL PEDIATRICS & ADOLESCENT MEDICINE**

(205-638-9585) 410-CPP

◆**Dr. Carolyn S. Ashworth** Professor  
\*Dr. Jennie Andresen Associate Professor  
Dr. Allury Arora Assistant Professor  
\*Dr. Cason Benton Associate Professor  
Krista Casazza, PhD Associate Professor  
\*Dr. Allison Cavender Assistant Professor  
\*Dr. Jennifer Chambers Assistant Professor  
Dr. Candice Dye Assistant Professor  
Dr. H. Hughes Evans Professor  
Dr. Crayton A. Fargason Professor  
\*Dr. DeeAnne S. Jackson Associate Professor  
\*Dr. Snehal Khatri Assistant Professor  
\*Dr. Carin Richard Kiser Associate Professor  
Dr. Morissa Ladinsky Associate Professor  
Dr. Jamie McKinney Assistant Professor  
Dr. Myriam Peralta Professor  
Dr. Terry C. Wall Professor

**Adolescent Medicine**

Heather McGinnis, PhD Assistant Professor  
Dr. Nefertiti Durant Associate Professor  
Dr. Tina Simpson Associate Professor  
Dr. Marsha S. Sturdevant Professor  
Dr. Stephenie Wallace Associate Professor

**Med-Gerontology/Geriatrics/Palliative Care**

(205-933-8101) VAMC 6TH. zip 0001

◆**Dr. Sam Perna** Assistant Professor  
Dr. Michael Barnett Assistant Professor  
Dr. Michael Hurst Assistant Professor  
Dr. Ashley C. Nichols Assistant Professor



**HEMATOLOGY/ONCOLOGY**

(205-638-9285) 512-Lowder

◆**Dr. Kim Whelan** **Acting Div. Director**  
 Dr. Elizabeth Alva Assistant Professor  
 Dr. Smita Bhatia Professor  
 Dr. Christy Bemrich-Stolz Assistant Professor  
 Dr. Joseph Chewning Associate Professor  
 Dr. Gregory Friedman Associate Professor  
 Dr. Frederick Goldman Professor  
 Dr. Hilary Haines Assistant Professor  
 Dr. Lee M. Hilliard Professor  
 Dr. Thomas Howard Professor  
 Dr. Matthew Kutny Assistant Professor  
 Wendy Landier, PhD, RN Associate Professor  
 Dr. Jeffrey Lebensburger Associate Professor  
 Dr. Zachary LeBlanc Instructor  
 Brandi McClain Pernell, DNP Assistant Professor  
 Purnima Singh, PhD Assistant Professor  
 Avi Madan-Swain, PhD Professor  
 Dr. Alyssa Reddy Professor  
 Erik Westin, PhD Instructor  
 Dr. Julie Woolfson Assistant Professor  
 Dr. Ana Xavier Assistant Professor

**PEDIATRIC HOSPITAL MEDICINE**

(205-638-9922) McWane 108

◆**Dr. Robert F. Pass** **Prof & Director**  
 Dr. Stephanie Berger Assistant Professor  
 Dr. Emily Casey Assistant Professor  
 Dr. Megan Hofto Assistant Professor  
 Dr. Natalia Lotz Instructor  
 Dr. Sri Narayanan Assistant Professor  
 Dr. Lauren Nassetta Assistant Professor  
 Dr. Mary Orr Instructor  
 Dr. Nichole Samuy Assistant Professor  
 Dr. Paul Scalici Assistant Professor  
 Dr. Susan Walley Associate Professor  
 Dr. Chang Wu Assistant Professor

**INFECTIOUS DISEASE/ VIROLOGY**

(205-934-2441) 308-CHB

◆**Dr. Richard J. Whitley**  
 Dr. David W. Kimberlin Prof & Co-Director  
 Mary Ballestas, PhD Assistant Professor  
 Dr. Suresh Boppana Professor  
 Dr. William J. Britt Professor  
 Dr. Marilyn Crain Professor  
 Maaik Everts, PhD Associate Professor  
 Dr. Karen Fowler Professor

**INFECTIOUS DISEASE/ VIROLOGY (cont..)**

(205-934-2441) 308-CHB

Dr. S. Cecelia Hutto Professor  
 Dr. Scott James Assistant Professor  
 Mark Prichard, PhD Professor  
 Debra Quenelle, PhD Associate Professor  
 Dr. Shannon Ross Associate Professor  
 Veronica Sanchez, PhD Assistant Professor  
 Dr. Sergio Stagno Professor Emeritus  
 ◆**Dr. Waldemar A. Carlo** **Professor**  
 Dr. Namasivayam Ambalavanan Prof & Co-Director  
 Dr. Allison Black Assistant Professor  
 Dr. Kathryn Buchan Assistant Professor  
 Dr. Carl H. Coghill Professor  
 Dr. George El Ferzli Assistant Professor  
 Dr. Hannah Hightower Assistant Professor  
 Dr. Tamas Jilling Associate Professor  
 Dr. Jegen Kandasamy Assistant Professor  
 Dr. Virginia A. Karle Professor  
 Dr. Charitharth Lal Assistant Professor  
 Dr. Albert Manasyan (Zambia) Assistant Professor  
 Dr. Joseph B. Philips Professor  
 Dr. Maran Ramani Assistant Professor  
 Dr. Ariel Salas Assistant Professor  
 Dr. Trent Tipple Associate Professor  
 Dr. Brian Sims Associate Professor  
 Dr. Rune Toms Associate Professor  
 Dr. Lindy Winter Associate Professor

**NEPHROLOGY**

(205-638-9781) 516-Lowder

◆ **Dr. Daniel Feig** **Professor**  
 Dr. David Askenazi Associate Professor  
 Dr. Sahar Fathallah-Shaykh Assistant Professor  
 Dr. Michael Seifert Assistant Professor  
 Dr. Monica Tucci-Cramer Assistant Professor

**NEUROLOGY**

(205-996-7850) 314-CHB

◆ **Dr. Leon S. Dure** **Professor**  
 Dr. Matthew Alexander Assistant Professor  
 Dr. Pierre Fequiere Assistant Professor  
 Dr. Monisha Goyal Professor  
 Dr. Katherine Hammond Assistant Professor  
 Dr. Krisztina Harsanyi-Jilling Assistant Professor

**NEUROLOGY (cont.)**

(205-996-7850) 314-CHB

Dr. Samuel Hopper Assistant Professor  
 Dr. Pongkiat Kankirawatana Professor  
 Dr. Jan Mathisen Professor  
 Dr. Tony McGrath Associate Professor  
 Dr. Ismail Mohamed Associate Professor  
 Dr. Jayne Ness Associate Professor  
 Dr. Alan K. Percy Professor  
 Dr. Alyssa Reddy Professor  
 Dr. Rashid Salman Assistant Professor

**PULMONOLOGY**

(205-638-9583) 620-Lowder

◆**Dr. Hector Gutierrez** **Professor**  
 \*Dr. Kristin Avis Associate Professor  
 Dr. Jennifer Guimbellot Instructor  
 Dr. William Harris Assistant Professor  
 Dr. Wyn Hoover Associate Professor  
 Claire Lenker, PhD Associate Professor  
 Dr. Isabel Lowell Associate Professor  
 Dr. David Lozano Associate Professor  
 Dr. Mary Halsey Maddox Assistant Professor  
 Dr. Teri Magruder Associate Professor  
 Dr. Ammar Saadoun Assistant Professor  
 Dr. Steven Rowe Associate Professor  
 Valerie Tarn, PhD Asst Prof (Grant funded)  
 Dr. Brad Troxler Assistant Professor  
 Dr. Brett Turner Assistant Professor

**Huntsville Campus (256-551-4600)**

Dr. Gerald Judy Associate Professor  
 Dr. Vinit Mahesh Associate Professor  
 Dr. Madhuri Penugonda Assistant Professor

**REHABILITATION MEDICINE**

(205-638-9790) 210-CPP

◆**Dr. Drew Davis** **Associate Professor**  
 Dr. Paola "Lala" Mendoza Assistant Professor  
 Dr. Erin Swanson Assistant Professor  
 Dr. Charles Law Adjunct Professor

**RHEUMATOLOGY**

(205-638-9438) 210-CPP

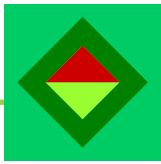
◆**Dr. Randy Cron** **Professor**  
 Dr. Tim Beukelman Associate Professor  
 Dr. Melissa Mannion Assistant Professor  
 Dr. Matthew Stoll Associate Professor  
 Dr. Peter Weiser Associate Professor



## ***Policies and Procedures***

The National Resident Matching Program (NRMP) recommends all applicants review the policies and procedures manual of any institution they are considering listing on their certified rank order list. We have included a copy of our Initial Resident Agreement for 2017-2018 that all incoming residents are required to sign. If you are interested in checking out a complete list of our policies and procedures, please check out the UAB Graduate Medical Education website at:

<http://medicine.uab.edu/medicine/home/residents-fellows/future>



# UAB MEDICINE

## UAB HOSPITAL

### INITIAL RESIDENT AGREEMENT

This agreement is entered into the \_\_\_ day of \_\_\_ between the Board of Trustees of the University of Alabama on behalf of The University of Alabama Hospital ("Hospital"), and \_\_\_\_\_ ("Resident"). Hospital wishes to appoint the Resident as a postgraduate year \_\_\_\_\_ resident in the \_\_\_\_\_ Program and Resident wishes to accept such appointment.

Therefore, the parties hereto agree as follows:

- 1. Term of Agreement.** Unless earlier terminated in accordance with this agreement, the term of the Resident's appointment is one year commencing on \_\_\_\_\_ and terminating on \_\_\_\_\_.
- 2. Graduate Medical Education Policies and Procedures.** Resident has been provided a copy of the UAB Hospital Graduate Medical Education Policies and Procedures. Resident acknowledges receipt of said document as well as having read and understood it. Resident acknowledges and comprehends the guidelines and/or the processes outlined in the GME Policies and Procedures, including, without limitations, those sections regarding resident eligibility and requirements for residency training (Section III.A), resident responsibilities and conditions of appointment (Section V), educational program and faculty responsibilities (Section VII), financial support and benefits (Section IV), ancillary and support services (Section VI), disciplinary procedures (Section X), grievance procedures and due process (Section XI), professional liability insurance (Section IV.F), health and disability insurance (Section IV.E), annual leave (Section IV.G), supervision of residents (Section VIII.C.), duty hours (Section VIII.H), moonlighting (Section VIII.L), counseling services (Section VI.C), physician impairment (Section IX), residency closure/reduction (Section IV.B), restrictive covenants (Section III.C), and University of Alabama at Birmingham policies on harassment (Appendix 9).
- 3. ACGME Accreditation Related Activities.** In programs accredited by the Accreditation Council for GME (ACGME), resident acknowledges and agrees to maintain compliance with activities related to program accreditation in the time prescribed. These activities include, but are not limited to, completing the ACGME Resident Survey, logging duty hours and completing case logs as requested by the Program Director.
- 4. Salaries.** Salaries are determined each year based on the budget of the Hospital with approval by the Dean's Council for Graduate Medical Education. Resident shall be paid the salary approved for the appointed postgraduate year, as specified in Section 1 of this agreement, and in accordance with the GME Policies and Procedures, Section IV.D.
- 5. Physical Examination.** Resident understands that failure to complete a health screening examination performed by the Hospital, as outlined in Section V.D. of the GME Policies and Procedures will result in suspension or termination of his/her appointment as a resident.
- 6. Tobacco-Free Hiring Policy.** Resident understands that he/she will not be hired if found to test positive for nicotine use on the pre-employment drug screen performed by the Hospital, as outlined in Section V.E of the GME Policies and Procedures.
- 7. USMLE/COMLEX Examinations and Alabama Licensure.** Resident understands that failure to pass the USMLE or COMLEX examinations and obtain licensure in the State of Alabama, as outlined in Sections V.K, V.L, and V.M of the GME Policies and Procedures, will result in suspension or termination of his/her appointment as a resident.
- 8. Renewal of Agreement.** Resident understands and acknowledges that this agreement expires on the date set forth in Section 1 and that Hospital makes no commitment to renew this agreement. Reappointment and advancement of the Resident is at the discretion of the Program Director in accordance with Section III.F. of the GME Policies and Procedures. If a decision is made by the Hospital not to renew this agreement at the end of its one year term, notice of such nonrenewal shall be made in writing four months in advance of \_\_\_\_\_, in accordance with section III.D of the GME Policies and Procedures. However, if the primary reason for the non renewal occurs within the four months prior to the end of the agreement, the notice of non renewal may be sent less than four months in advance of the non renewal. Any resident receiving notice of intent to not renew his/her contract may request a hearing as outlined in Grievance Procedures, Section XI.C. Any resident receiving notice of intent of non-promotion to the next level of training may request informal adjudication as outlined in Grievance Procedures, Section XI.B. Each Resident who is offered a renewal of this agreement must accept such offer in writing within thirty (30) days of the date shown in the first paragraph of the renewal contract. Likewise, if a decision is made by the Resident not to renew this agreement at the end of its one year term, the resident shall submit notice of such nonrenewal in writing to the Graduate Medical Education Department four months in advance of \_\_\_\_\_.
- 9. Termination of Agreement.** Hospital may terminate the Resident Agreement, as set forth in the GME Policies and Procedures. If the resident leaves the program, thereby terminating this agreement, the resident will have breached this agreement. In the event of such breach, resident understands and agrees to the following: 1) the Hospital will report the resident's breach of the agreement to the National Resident Matching Program, if applicable; and, 2) the Program Director and the Hospital will include the fact of the resident's breach in any reference letters.
- 10. Acceptance.** This agreement shall not be effective and shall not bind either party unless it is submitted to Hospital within sixty (60) days of the date shown in the first paragraph of this agreement and accepted by the Hospital by signature below.

THE UNIVERSITY OF ALABAMA HOSPITAL:

By: \_\_\_\_\_  
**Gustavo Heudebert, MD- Designated Institutional Official**

Date: \_\_\_\_\_, 20\_\_\_\_

By: \_\_\_\_\_  
**Program Director**

Date: \_\_\_\_\_, 20\_\_\_\_

Program:

RESIDENT:

By: \_\_\_\_\_

Date: \_\_\_\_\_, 20\_\_\_\_



Salary	Benefits	Miscellaneous
<ul style="list-style-type: none"> <li>• PGY-4 \$57,379</li> <li>• PGY-5 \$59,420</li> <li>• PGY-6 \$62,057</li> </ul> <p>* Stipends are reviewed annually in accordance with those of the Council of Teaching Hospitals.</p>	<p><u>At no cost:</u></p> <ul style="list-style-type: none"> <li>• Professional liability insurance</li> <li>• Group term life insurance</li> <li>• Long-term disability insurance</li> <li>• Accidental death and dismemberment insurance</li> <li>• Pagers</li> <li>• Photocopying/faxing privileges</li> <li>• Medline database</li> <li>• Counseling services through the UAB Faculty and Staff Assistance Program</li> <li>• Three weeks off/year</li> <li>• Family leave</li> </ul> <p><u>Other benefits:</u></p> <ul style="list-style-type: none"> <li>• Health insurance plans for residents, spouses and dependent children provided at favorable rates</li> <li>• Dental insurance at favorable rates</li> <li>• Hospital Parking at favorable rates</li> <li>• Campus Recreation Center</li> <li>• Onsite Childcare</li> </ul>	<ul style="list-style-type: none"> <li>• Financial support for presentation at a scientific meeting</li> <li>• Conference travel allowance</li> <li>• Financial support for travel to fellows meeting</li> <li>• Financial support for international rotation</li> <li>• On-site Medical Library</li> <li>• Medical license reimbursement</li> <li>• PALS, ATLS Courses</li> <li>• Yearly in-service exam</li> </ul>





## Employee Benefits for House Officers

### UNIVERSITY PAID INSURANCE

	<u>ANNUAL SALARY</u>	<u>COVERAGE</u>
1. Group Term Life Insurance Coverage varies with salary as indicated. No cost to employee.	\$24,000-29,999 \$30,000-39,999 \$40,000 and above, 125% of salary with a maximum insurance coverage of \$300,000.	\$37,500 \$50,000
2. Accidental Death and Dismemberment Insurance No cost to employee.	\$22,500 for accidental death	
3. Long-Term Disability Insurance (Salary Continuation) After a 90-day waiting period, 66 2/3% month salary (not to exceed \$10,000 per month) for the first 90 days. The benefit is then reduced to 60%. No cost to employee.		

### HEALTH CARE PLANS:

Some form of health insurance coverage is mandatory. Proof of insurance is required if the University's VivaUAB, VivaAccess, or Blue Cross are not elected.

VivaUAB, VivaAccess, or Blue Cross monthly deductions:

	<u>YOUR COST (2016)</u>		
	<u>VivaUAB</u>	<u>VivaAccess</u>	<u>Blue Cross/PMD</u>
<b>Single coverage</b>	<b>\$ 65.38</b>	<b>\$ 146.19</b>	<b>\$ 182.77</b>
<b>Employee+up to 2</b>	<b>\$ 221.57</b>	<b>\$ 416.81</b>	<b>\$ 537.31</b>
<b>Family coverage</b>	<b>\$ 334.12</b>	<b>\$ 617.96</b>	<b>\$ 826.80</b>

Coverage under UAB's group health care plans must begin on either the date of employment or the first day of the month following date of employment.

### VOLUNTARY BENEFITS:

- MetLife Dental Plans  
Basic Option: Single Coverage - \$18.08 month, Family Coverage - \$46.26/month  
Comprehensive Option: Single Coverage - \$34.42, Family Coverage - \$87.84  
(See UAB Employee Handbook for more information)
- UAB Select: Flexible Spending Accounts - Pretax reimbursement for eligible medical and dependent care  
Up to \$2500 per year in a health care account. For dependent care accounts, you can set aside \$5000 or \$2500 for married taxpayers filing separate returns.
- Voluntary Life Insurance  
Maximum Coverage: Up to 5 times your salary, not to exceed \$1.4 million.  
Guaranteed Issue: 3 times your salary or \$500,000; elected during the first 60 days of employment without evidence of insurability.
- Voluntary Accidental Death and Dismemberment Insurance  
Maximum Coverage: \$500,000

### OTHER BENEFITS:

- Social Security taxes and benefits established by the U.S. Government.
- Unemployment Compensation Insurance paid entirely by the University.
- On-the-job Injury/Illness Program paid entirely by the University.

This information is a brief summary of benefits for general purposes only.  
Please refer to the UAB School of Medicine website for additional information (<http://medicine/home/>)



***Graduating Fellows'  
Favorite Things about UAB Pediatric  
Fellowship Training Program***

- Dr. Glaeser – very supportive Division Director
- Faculty very approachable, dedicated
- Large volume and patient diversity
- Patient workload (enough volume, not too much scutwork)
- Fellow residents
- Support and ancillary staff
- Quality of Attending Physicians
- Simulation
- Active, involved mentors
- Excellent, comprehensive clinical experience
- Moonlighting opportunities
- Nursing/RT/Pharmacy Staff
- Affordability of living in Birmingham
- Support from Virginia, Megan, & Jackie (coordinators)
- Vacation/Program Perks/Benefits
- Wonderful and supportive Program Director
- Prepares fellows to handle emergencies well
- Willingness of administration to alter program to meet fellows' needs
- Dedication to giving the best care
- Phenomenal teaching staff
- Prepares fellows to recognize a sick child quickly
- Wireless technology for all fellows
- Social Events
- Support from other fellows, Division Director, and attending's
- Team-oriented, supportive culture, and overall positive work environment
- The people, the people, the people
- Autonomy





2016 - 2017

UAB Department of Pediatrics  
Fellowship Program  
CPP1, Suite 110  
1600 7th Avenue South  
Birmingham, AL 35233-1711

Phone: 205-638-9587  
Fax: 205-975-4623  
Email: [uabkids@peds.uab.edu](mailto:uabkids@peds.uab.edu)