

**Sickle Cell Disease Association of America – Mobile Chapter, Inc.
Trait Education (Newborn Screening Counseling)**

Staff that have been certified as Sickle Cell Counselor/Educators provide education during counseling appointments with parents/guardians and families of babies born with trait conditions.

During the appointment, the Sickle Cell Counselor/Educator:

- Provides the parents/family the child's results
- Assess the parents'/family's knowledge of sickle cell trait and disease
- Explains that trait is benign (trait, is not disease)
- Explains the structure and function of hemoglobin
- Discusses the differences between trait and disease
- Demonstrate risk by explaining patterns of inheritance (Visual aids used are included)
- Emphasize the importance of telling child his or her trait status, especially at reproductive age
- Discuss incidence and epidemiology of sickle cell trait and disease
- Explain the complications that have been associated with trait. Emphasize that they are very rare and are usually easy to prevent.
- Inform parents/family members that we offer testing if the parents are not aware of their sickle cell status

Sickle Cell Disease Association of America – Mobile Chapter, Inc.
Procedures for Disease Client Education

❖ **Confirm Status**

I. Assessment

- Intake
- Service Plan Development
- Evaluation
- Follow up

II. Disease Education

- Complications and manifestations
- Genetic inheritance
- Treatment(s)

III. Education & Linkage to Community/Public Resources

- SCDAA Services
- Medical Services
- Insurance (i.e. Medicaid/Private)
- Food stamps
- Local Food Banks
- Vocational Rehabilitation
- SSI/Disability

IV. Education regarding Health

- Hydration
- Nutrition/Diet
- Contraceptive Use
- Physical Care (heat, massage, therapies)
- Immunizations
- Developmental Expectations

V. Medical Home Placement

- Referrals
- Education on Compliancy

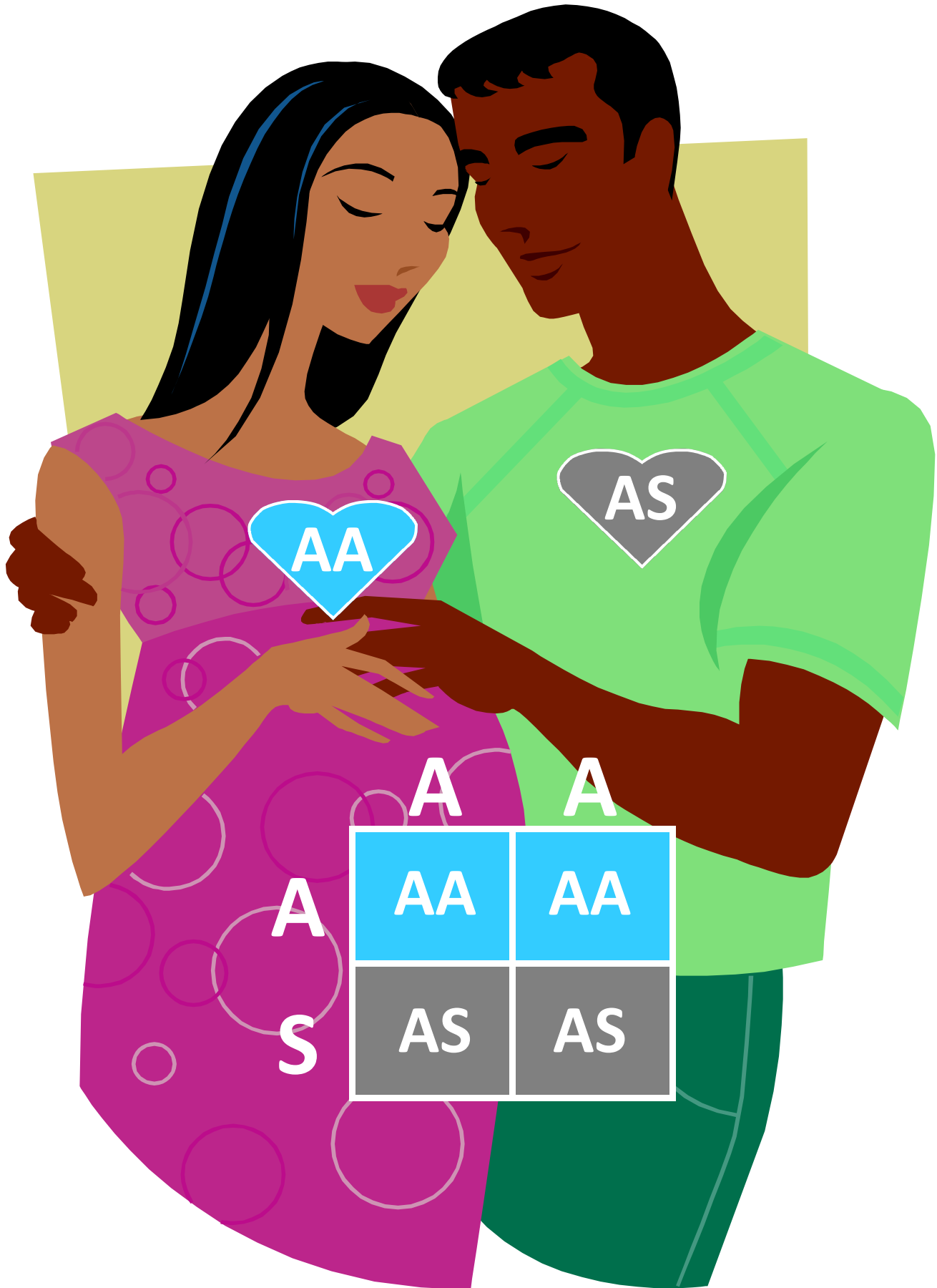
**Sickle Cell Disease Association of America – Mobile Chapter, Inc.
Sickle Trait and Disease Education (General Public)**

Staff that have been certified as Sickle Cell Counselor/Educators provide education presentations by request.

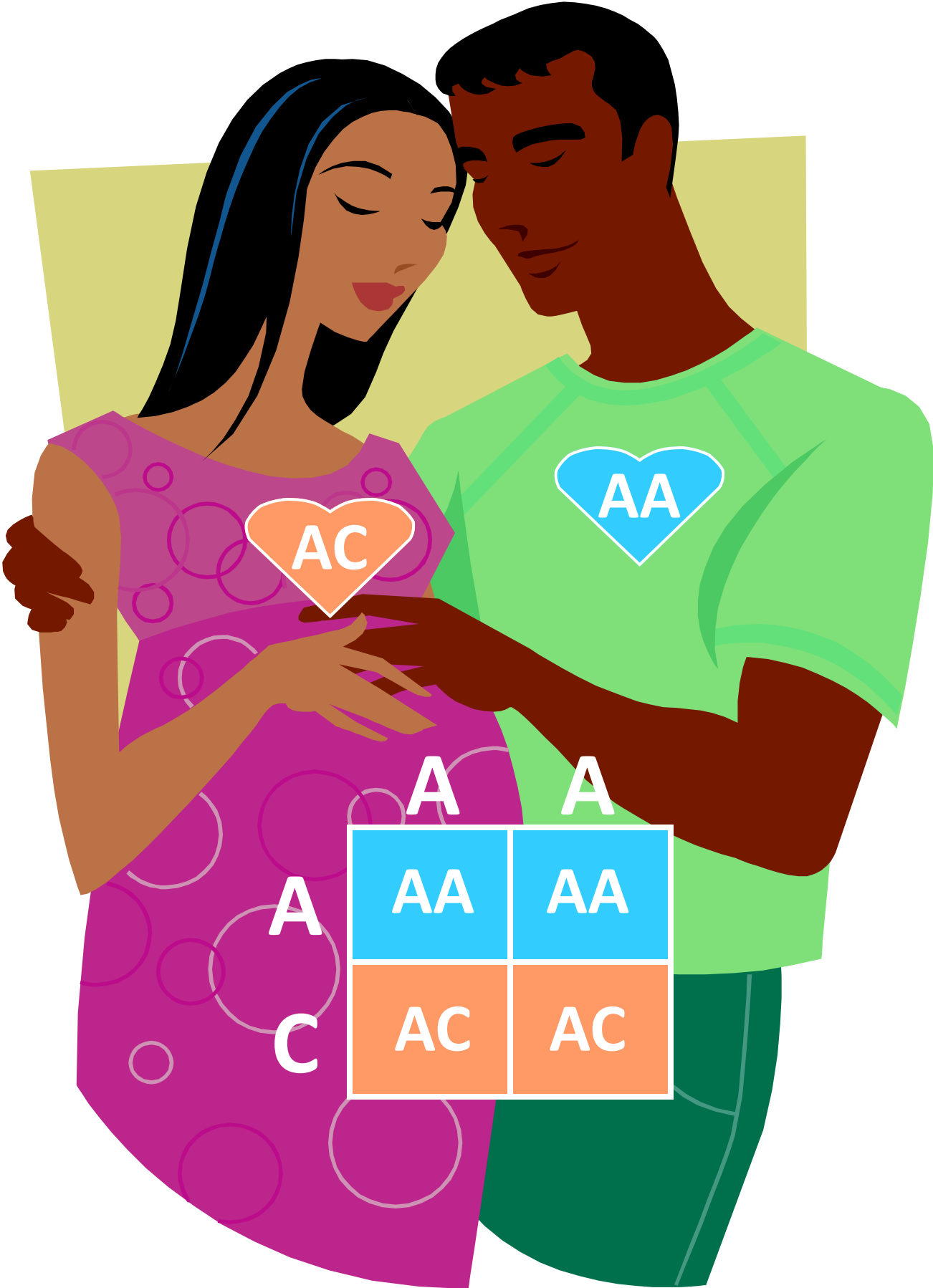
The content of presentations and education include:

- Discuss incidence and epidemiology of sickle cell trait and disease
- Discusses the differences between trait and disease
- Explains the structure and function of hemoglobin
- Demonstrate patterns of inheritance (Visual aids used are included)
- Explain what happens when the red blood cells sickle
- Explain some of the complications associated with sickle cell disease, including that there is no universal cure
- Explains that trait is benign (trait, is not disease)
- Emphasize the importance of knowing one's sickle cell status, especially at reproductive age

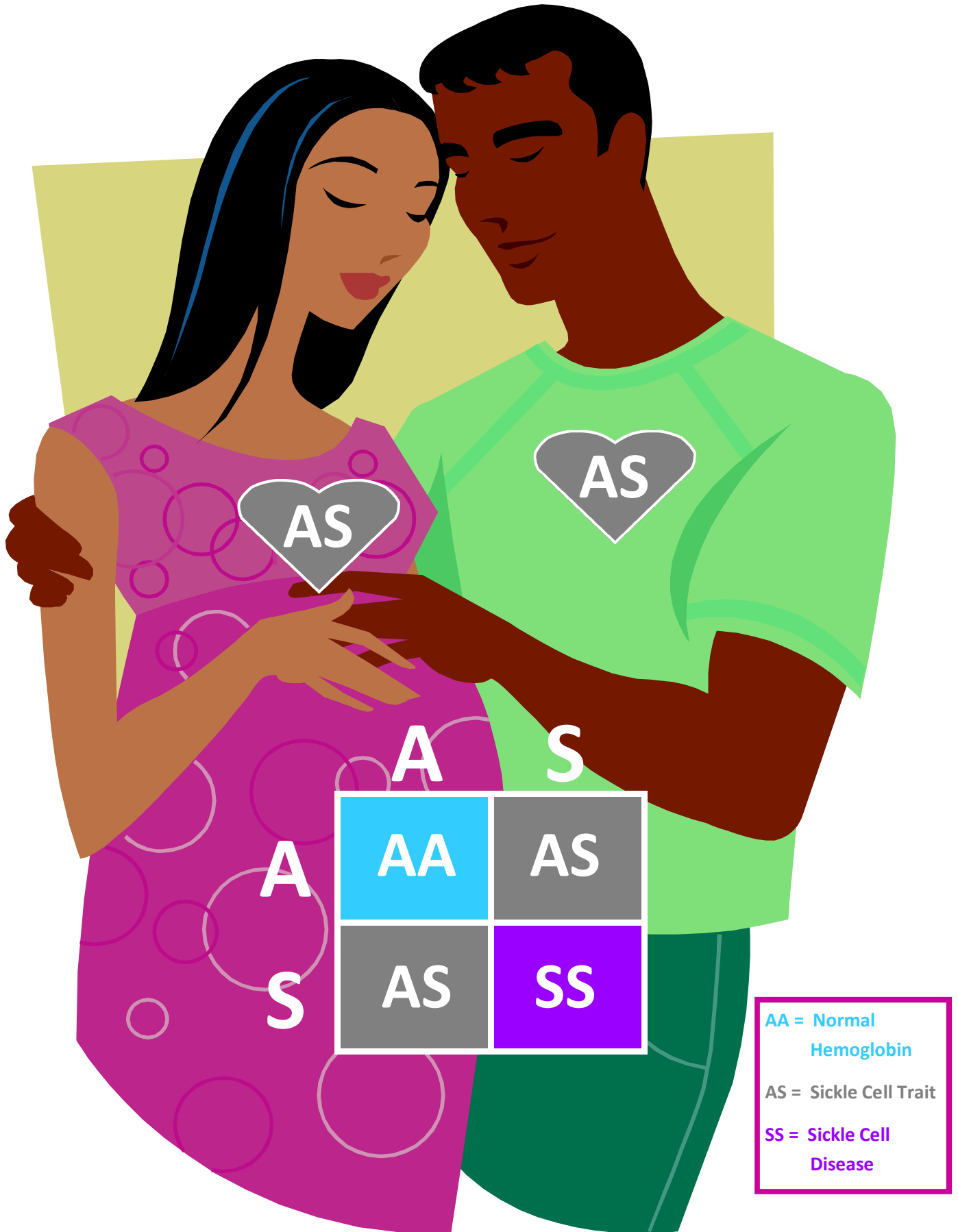
Inheritance of Sickle Cell Trait (AS)



Inheritance of Sickle C Disease (SC)

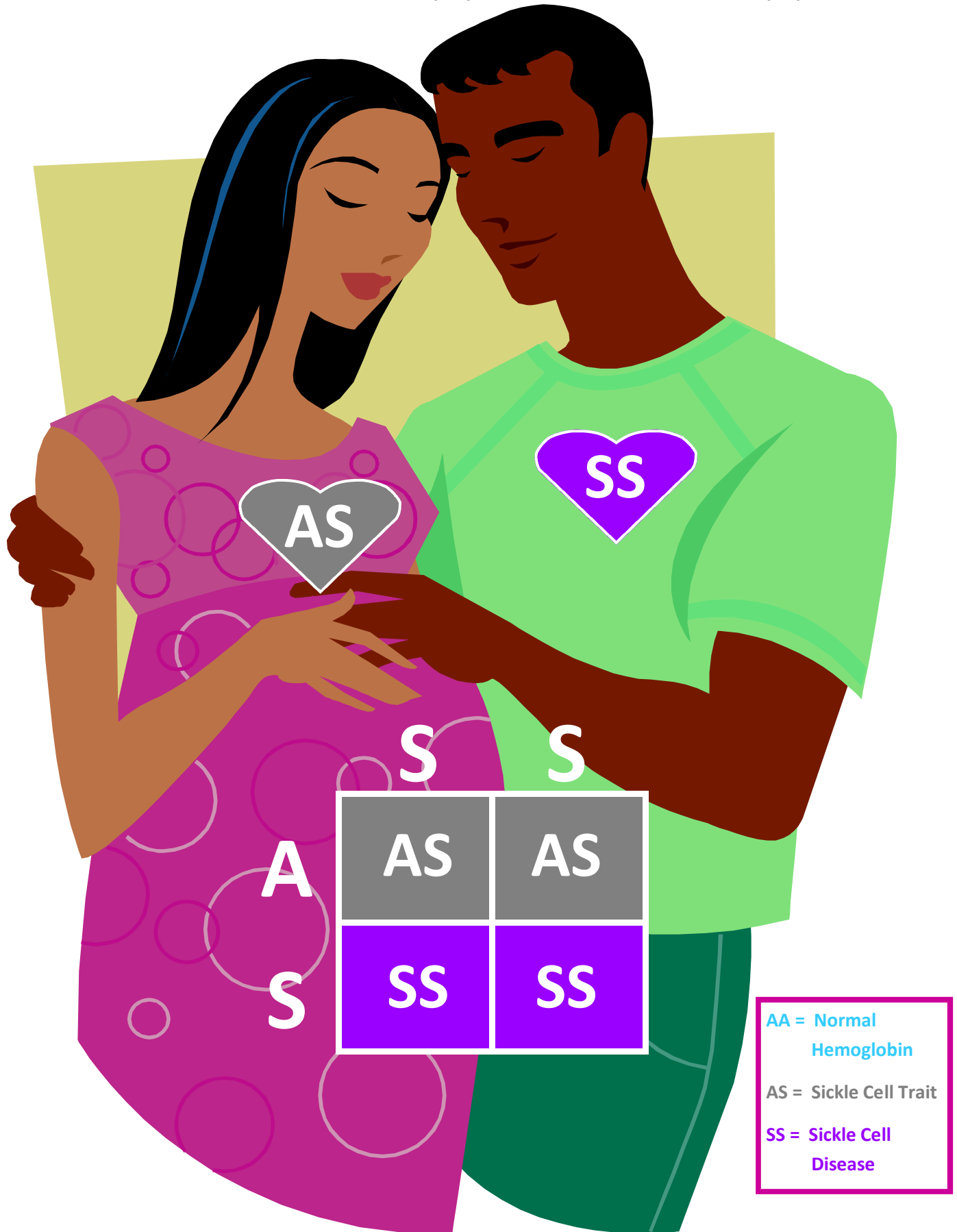


Inheritance of Sickle Cell Disease (SS)



Inheritance of Sickle Cell Trait & Disease (AS & SS)

One Parent has Sickle Cell Trait (AS) and the other had Disease (SS)



Inheritance of Sickle C Disease (SC)

