



# Civitan International Neuroimaging Laboratory

Mark Bolding, PhD, Co-Director | Kristina Visscher, PhD, Co-Director

Jane Allendorfer, PhD, Associate Director

Ingia Gentry, Eleanor P. Lewis, MA, John Totenhagen, PhD, Ryan Willoughby, PhD

## About Our Facility

The Civitan International Neuroimaging Laboratory (CINL) is located on the 1<sup>st</sup> floor of UAB Highlands Hospital. It houses a research dedicated Siemens Prisma 3T whole body scanner for structural and functional brain imaging, MRI preparation rooms and interview rooms for pre- and post-scan patient monitoring and testing, and a fully-equipped experimental suite for behavioral and physiological recording. Research equipment is housed in a dedicated room adjacent to the scanner room with a dedicated research penetration panel. The Siemens MAGNETOM Prisma MRI Scanner offers a 3T whole body MRI platform for the highest quality MRI research. Its design delivers maximum performance under prolonged high-strain conditions. Unmatched 3T full body magnet homogeneity, XR 80/200 gradient coil, parallel transmit architecture for shaped excitation and B0 shimming, and at-the-scanner 64 channel receiver architecture. UAB's Prisma is configured for neuroimaging with a 64 channel neuro coil and spectroscopy shimming hardware.

## Contact Information

For more information visit our website:

<https://www.uab.edu/medicine/cinl/>

Or email:

Eleanor Lewis at [cinl@uab.edu](mailto:cinl@uab.edu)



Or Scan Me!

## Resources and Equipment

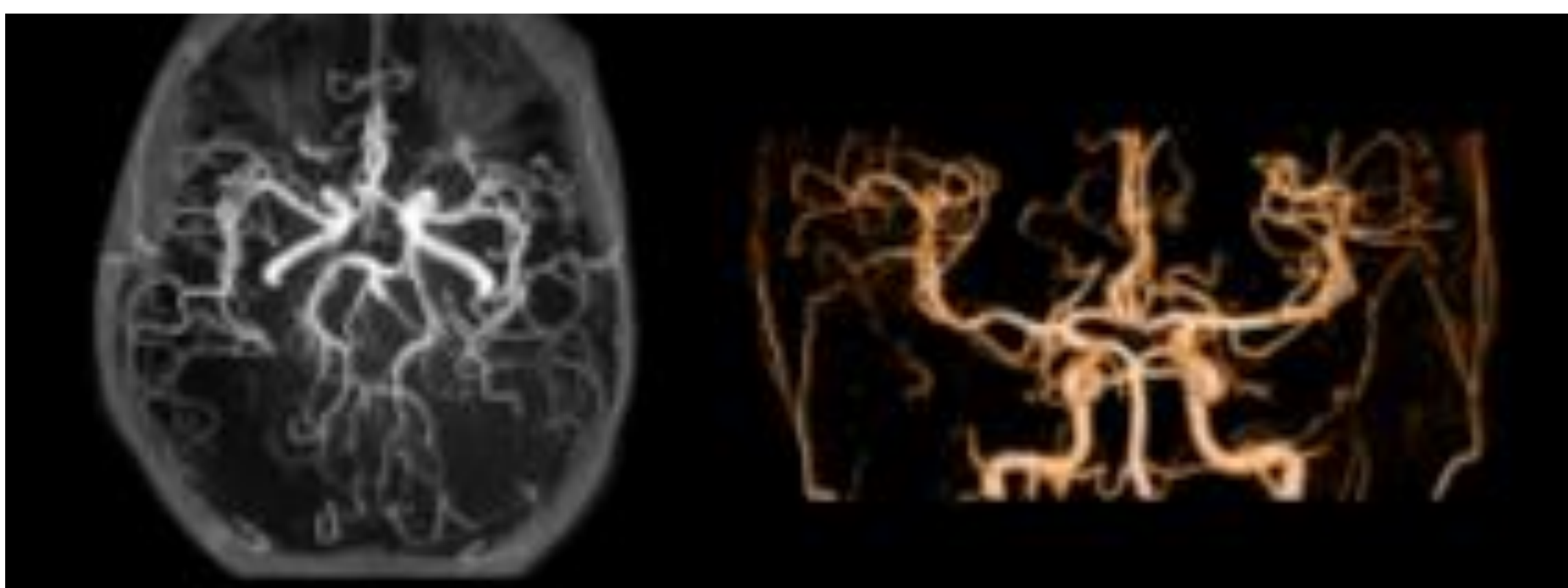
The facility has a large selection of coils to ensure optimal image quality for your particular application:

- 64 channel neuro
- 20 channel head and neck
- Head CP T/R
- Spine
- Anterior Array / Cardiac
- A variety of smaller special purpose coils including coils for human eye imaging and small animal imaging

We can also provide:

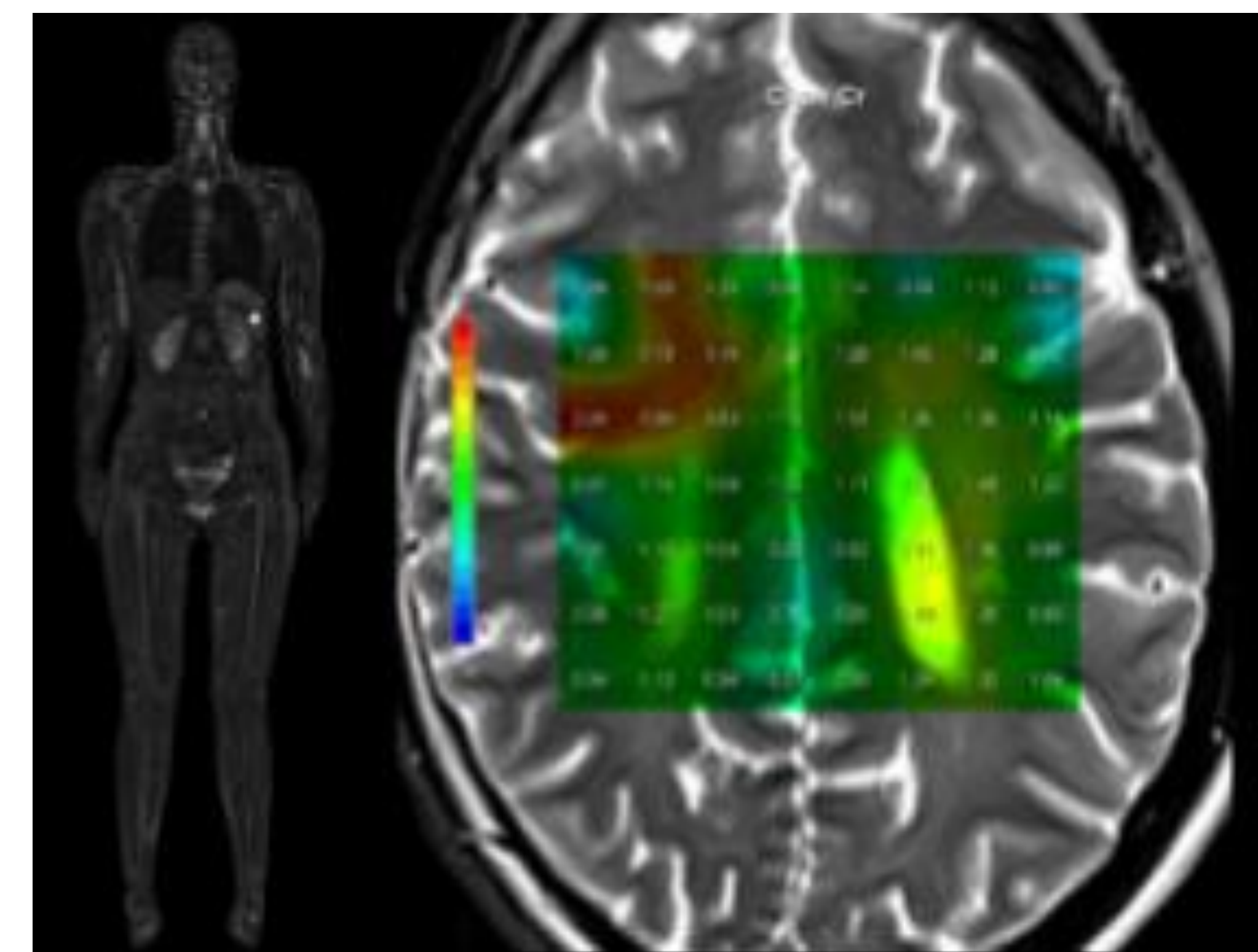
- Stimulus delivery and response hardware
  - Video
  - Audio
  - Button boxes
  - Stimulus generation computers
- Vital signs monitoring
  - SP02 / pulse ox
  - Respiration
  - ECG
  - Basal temperature
- MRI compatible anesthesia and ventilation is available for humans and animals.

The facility will also work with you to build specialized equipment for your particular needs.



## Our Continuing Mission

- Serve as a state-of-the-art research laboratory that fosters the advancement of functional magnetic resonance imaging and spectroscopy technique development for the neurosciences, for neuro-developmental and cognitive applications CNS diagnostics.
- Provide clinical functional neuroimaging capabilities to a wide array of researchers in translational neurosciences.
- Assist with planning experiments utilizing advanced magnetic resonance body and brain imaging and spectroscopy.



## Service Rates

- \$500/hour Monday-Friday (1pm to 9pm)
- \$250/hour Saturday-Sunday (5am to 9pm)
- \$100/hour All Week (9:01pm to 4:59am)

**UAB CIVITAN INTERNATIONAL NEUROIMAGING LABORATORY**

Knowledge that will change your world