



Pathology Core Research laboratory

The Pathology Core Research Lab (PCRL), located in the Lyons Harrison Research Building (LHRB) basement, provides state of the art histology and histomorphometric analysis of bone, implants and other tissue samples.



Histology

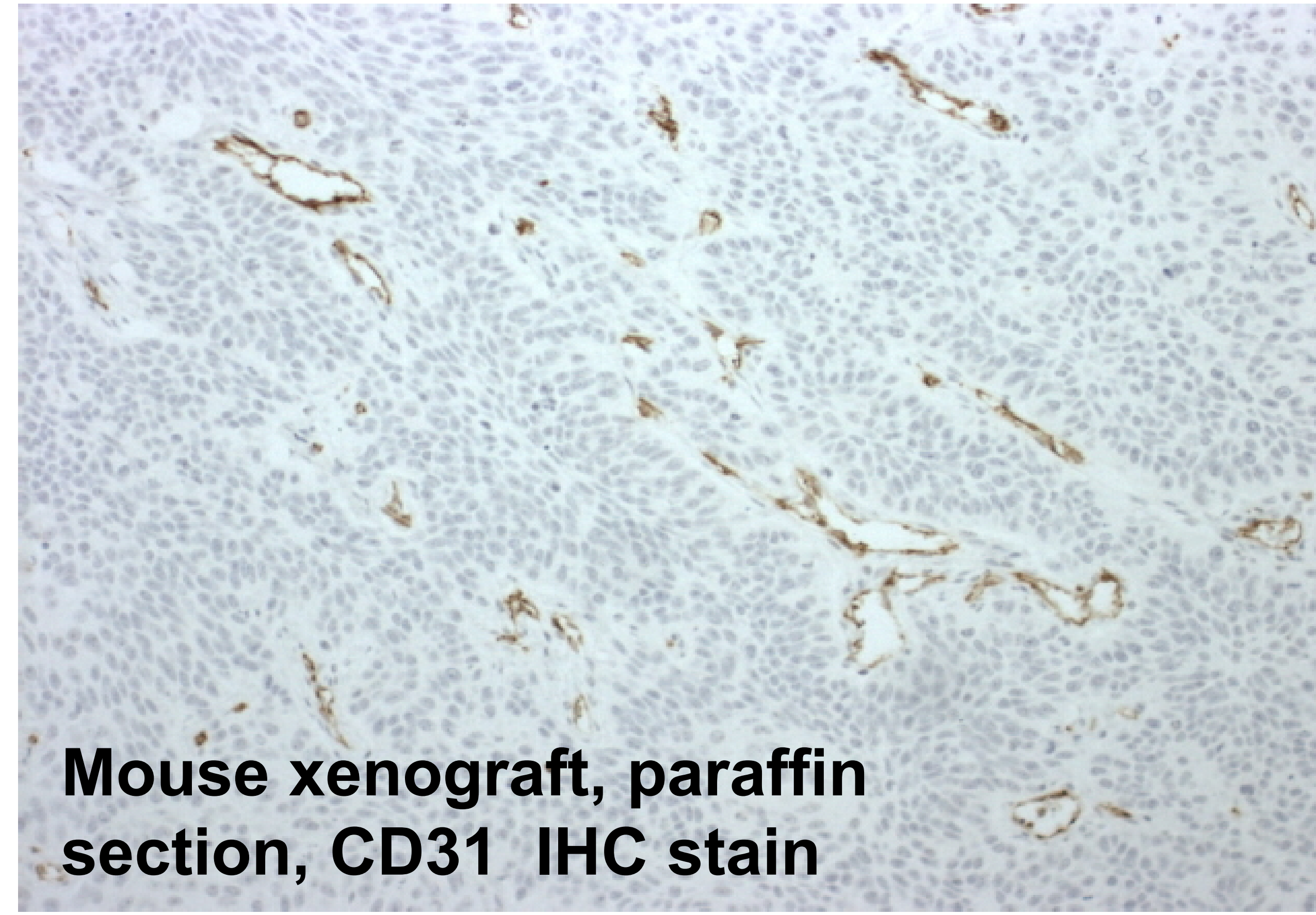
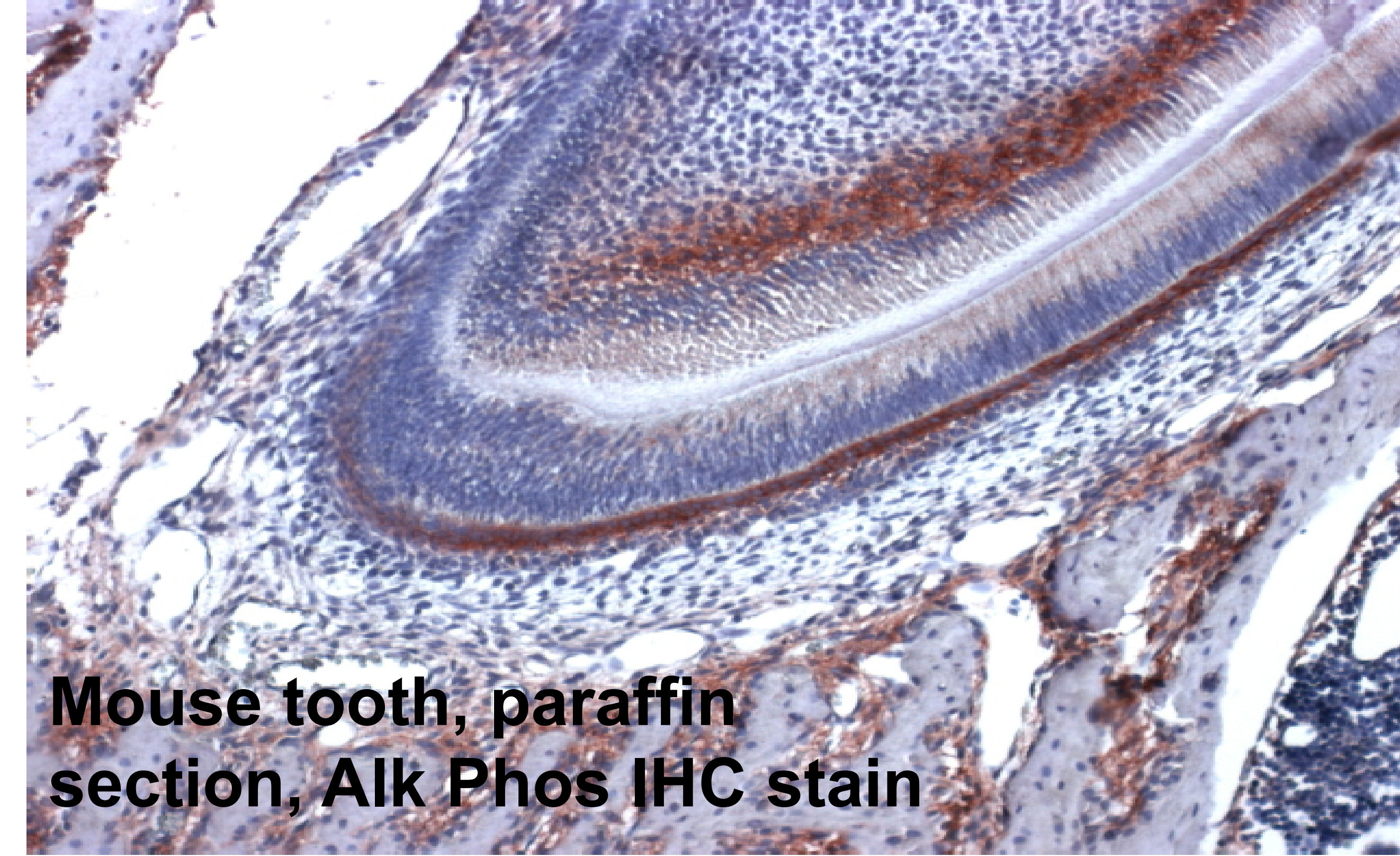
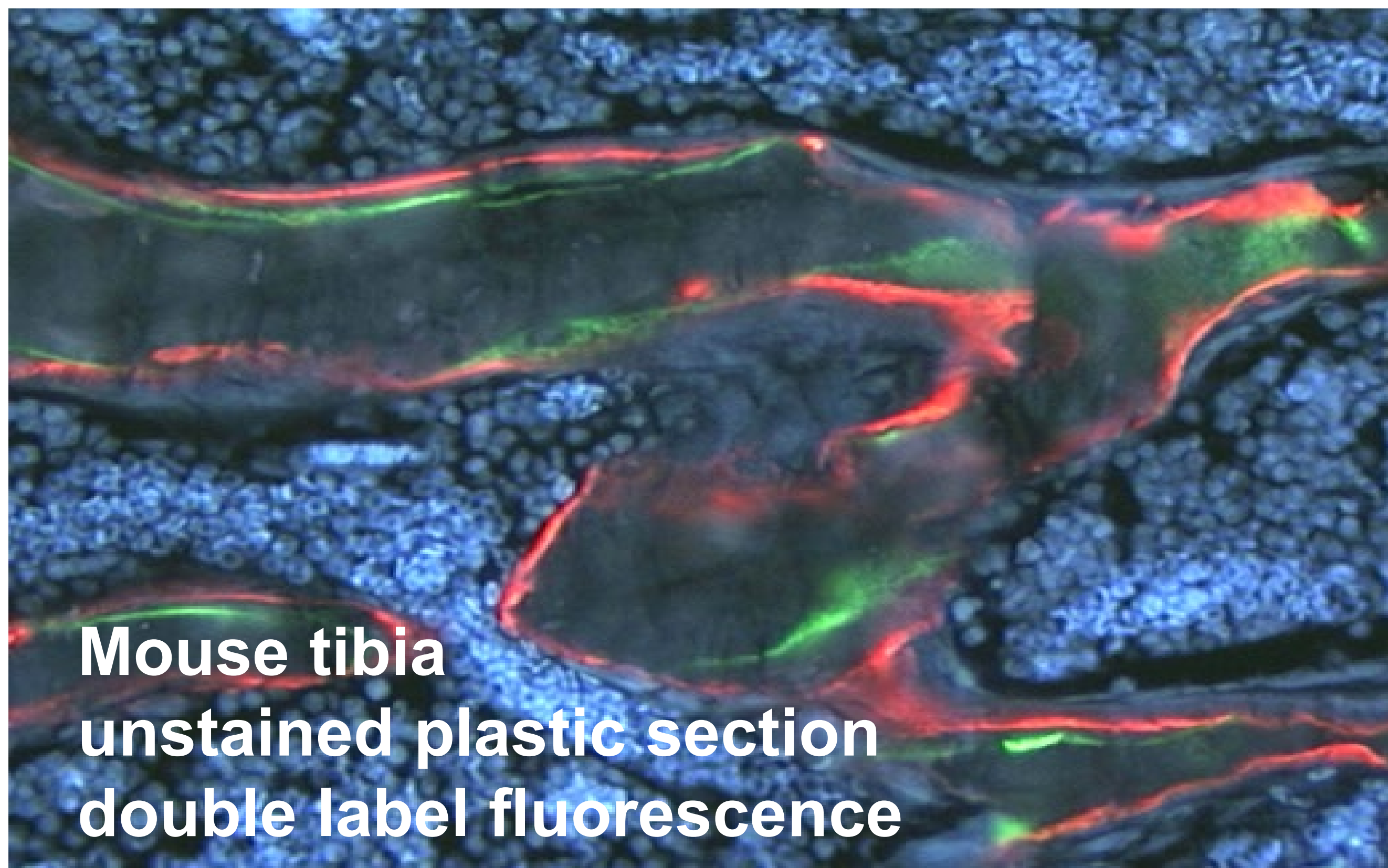
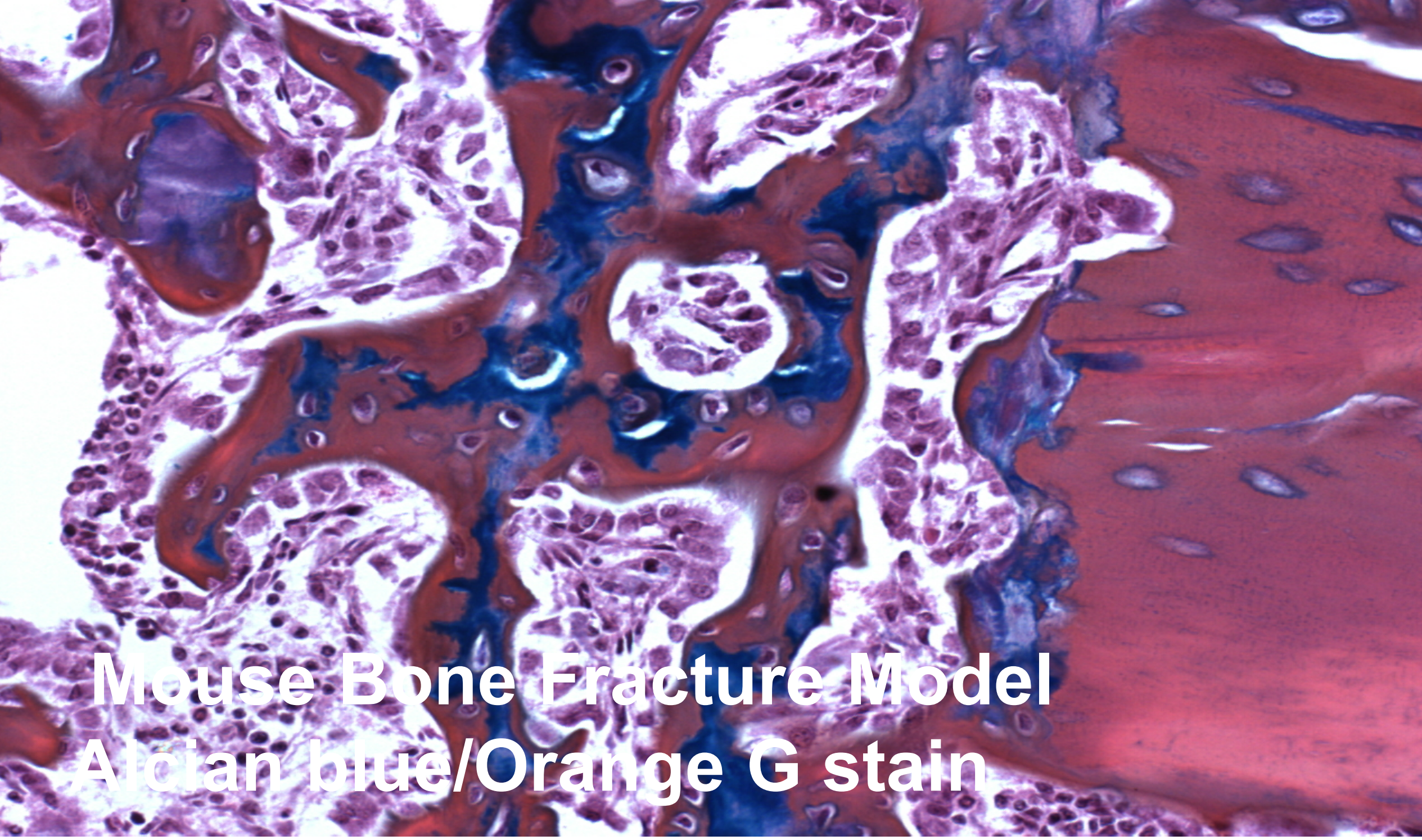
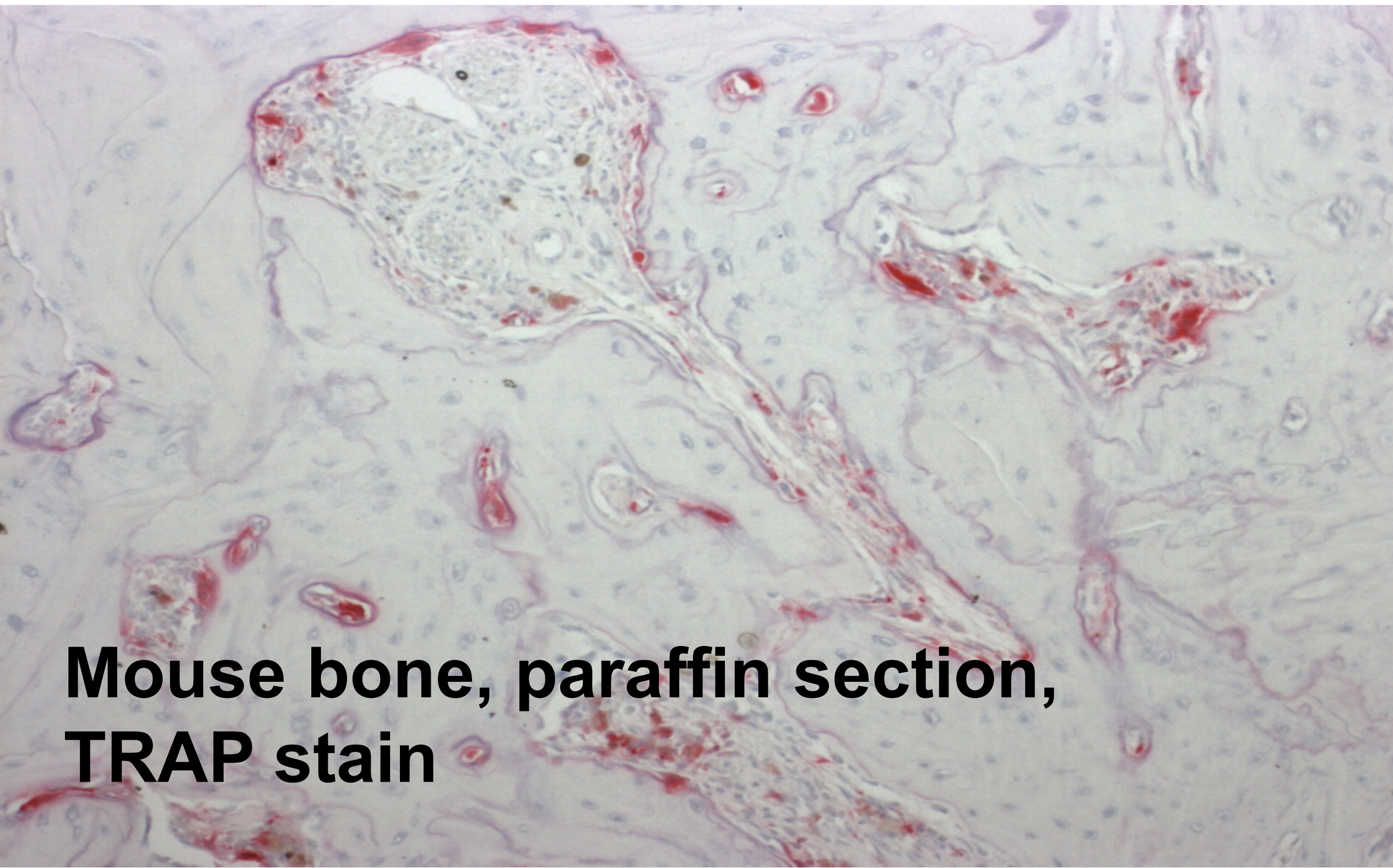
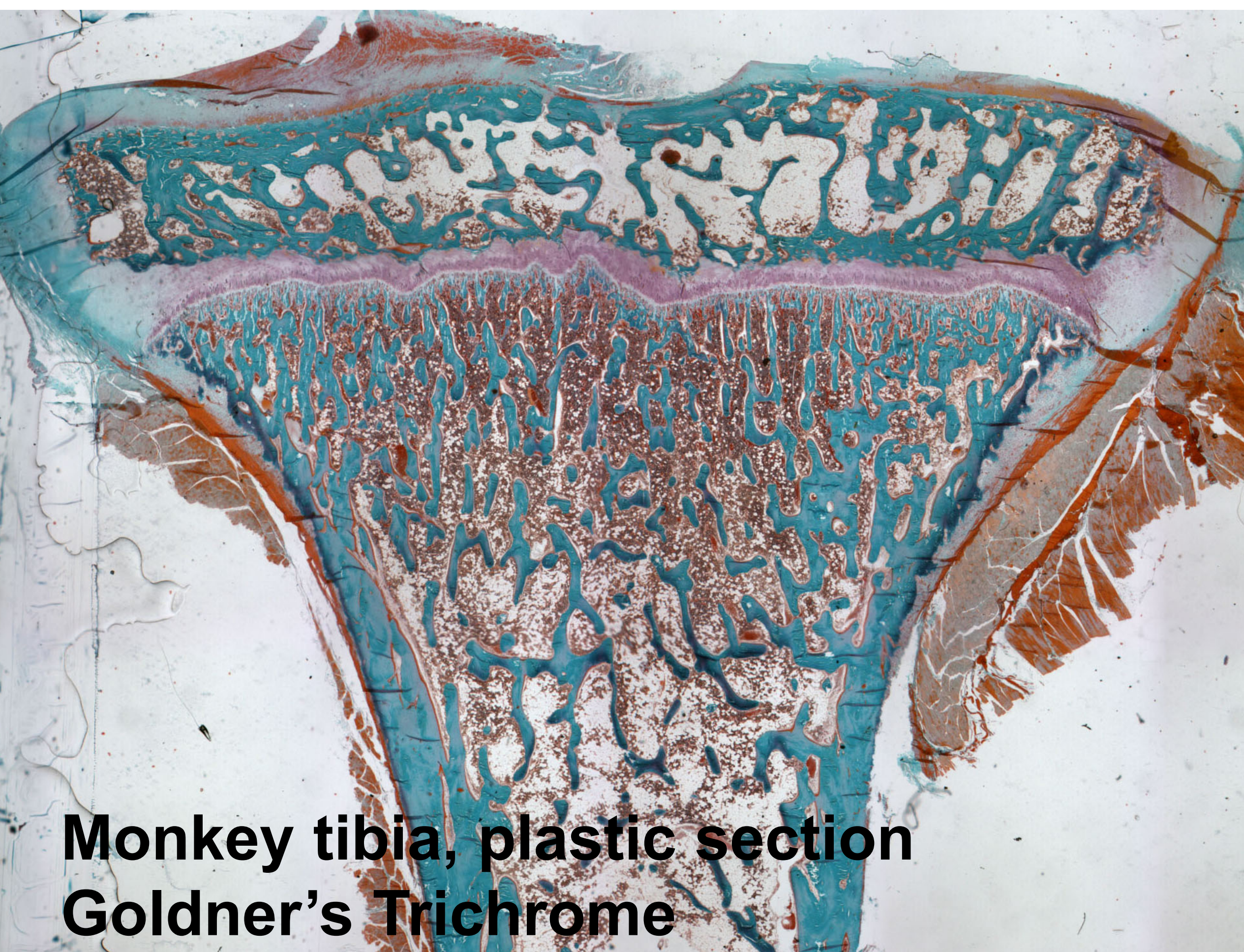
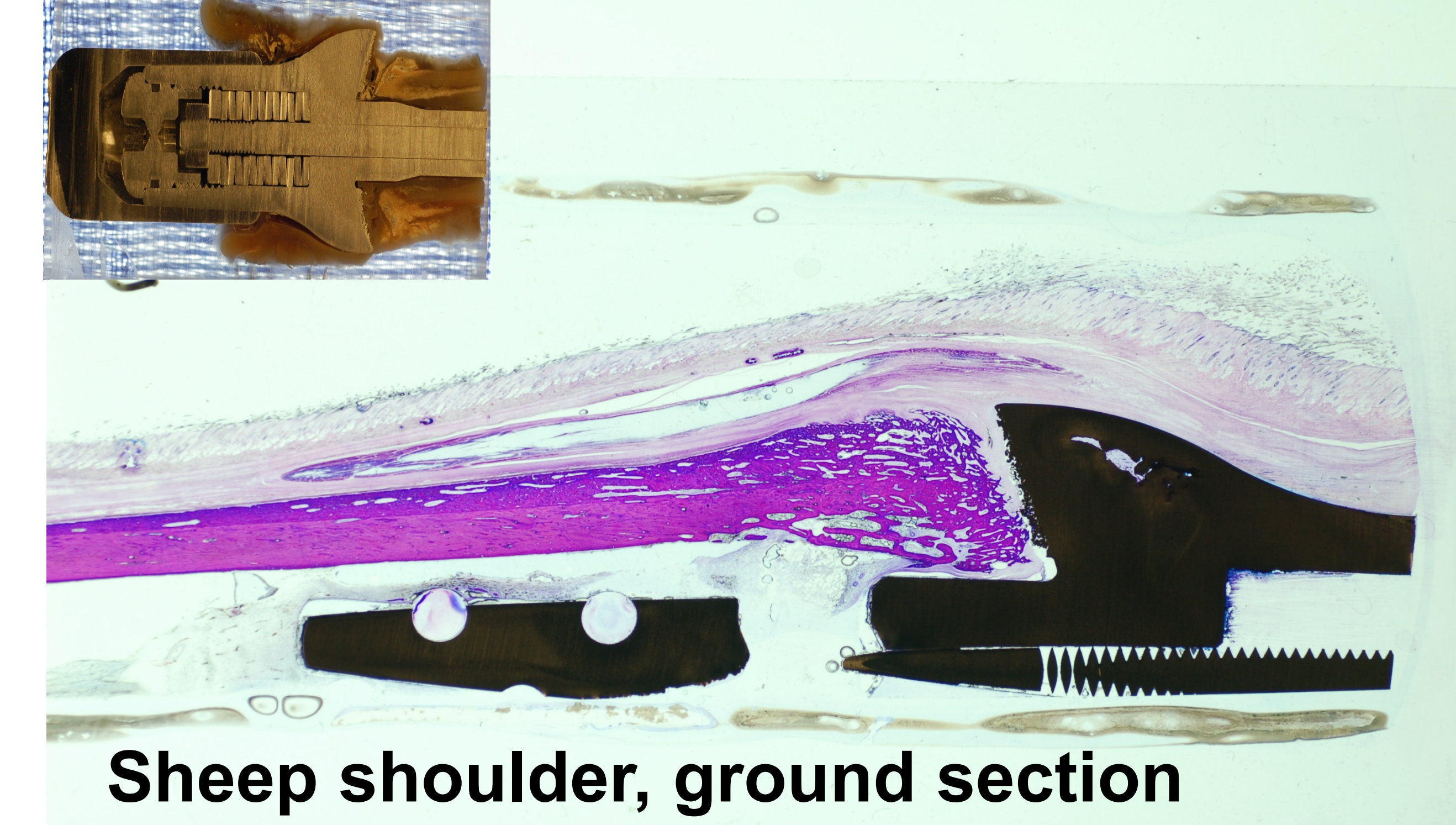
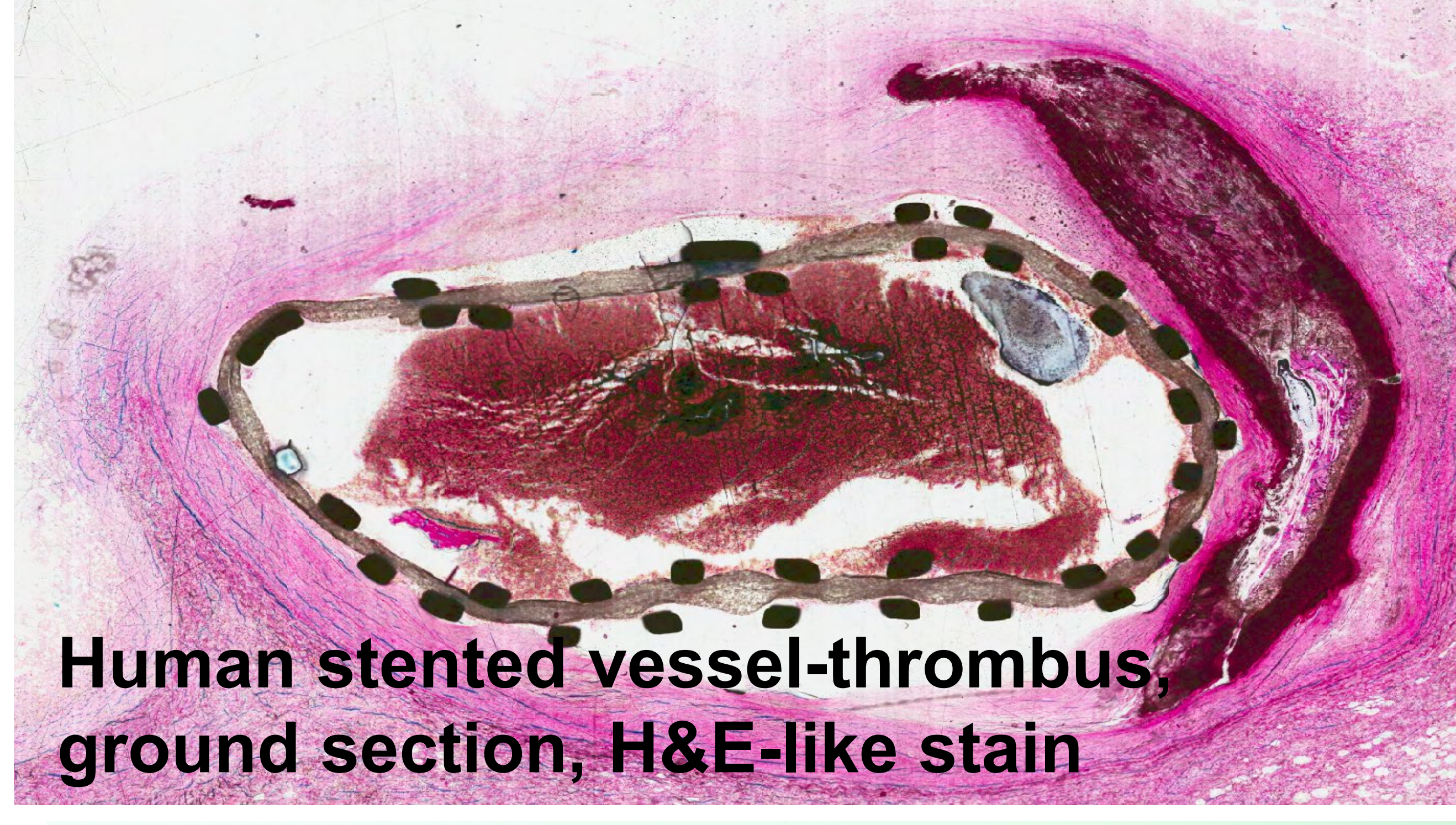
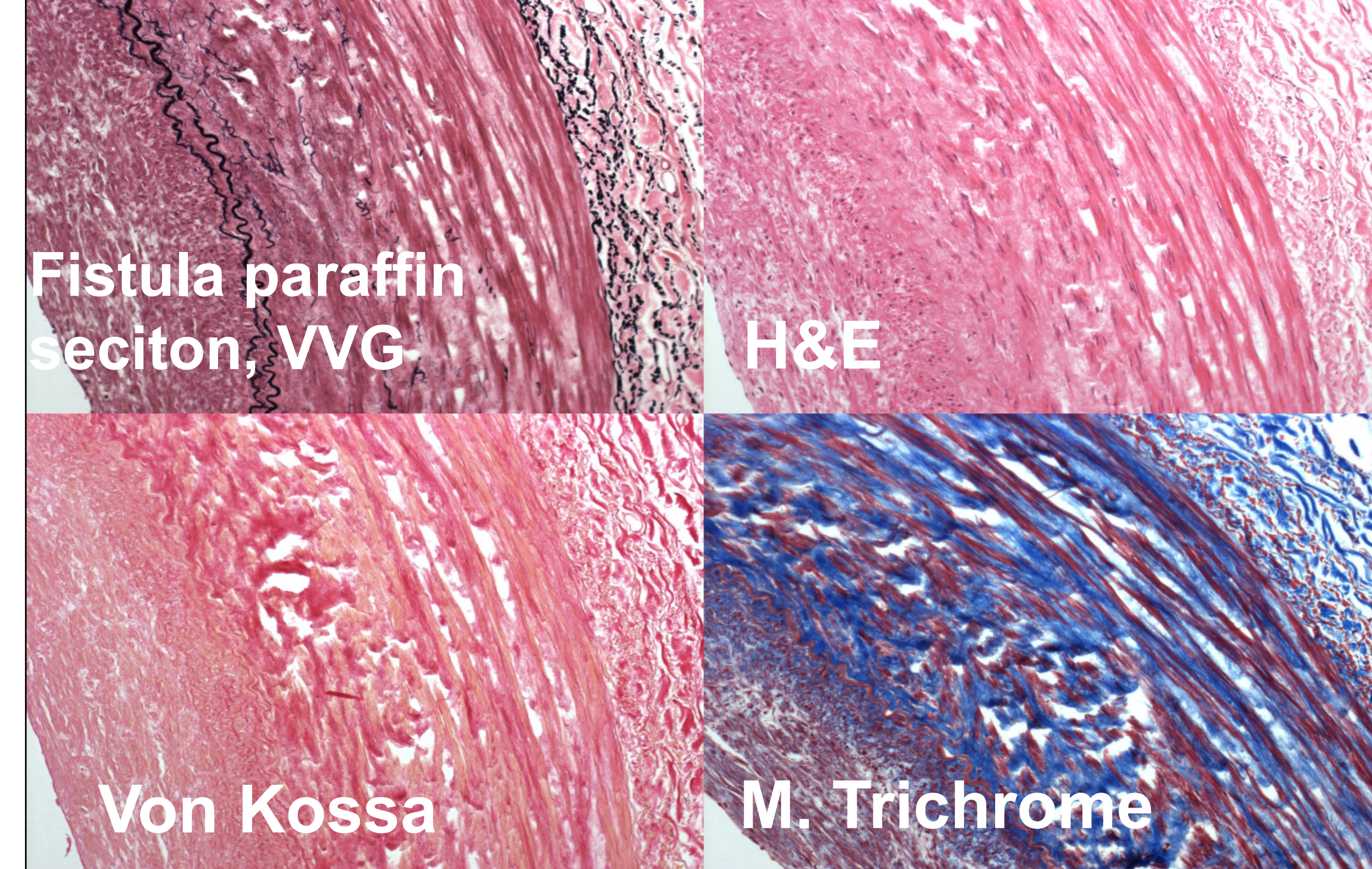
Histomorphometry

Core Users

Contacts

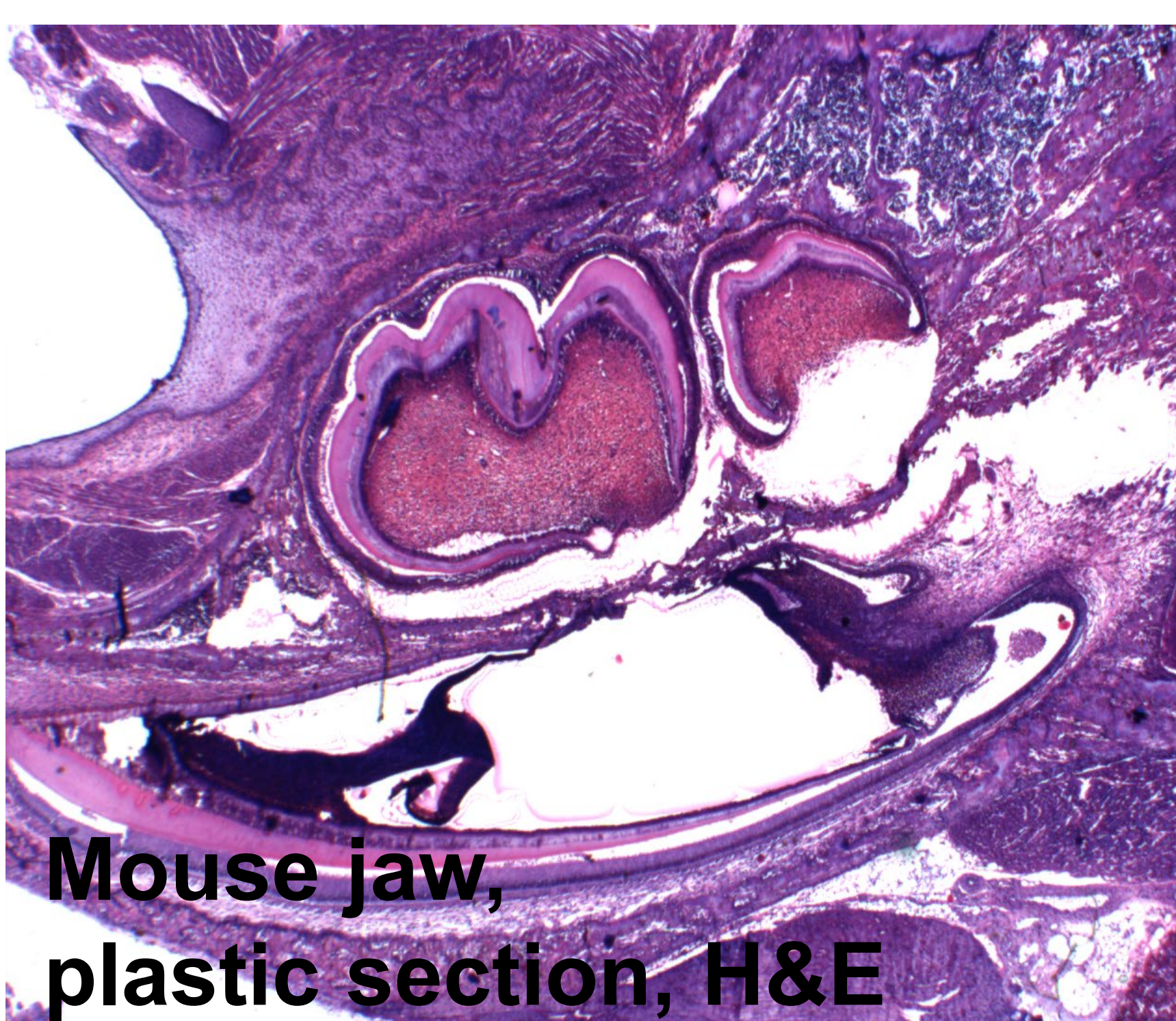
For histomorphometry studies we use the Bioquant® Image Analysis Software. Histomorphometry can be used to estimate cell numbers, positively labeled cells, cell volume, or distance measurements based on consensus standards. Also, it can be used to measure the amount of protein present in a band by comparison with the integrated optical density of a known standard.

Over the past ten years, our laboratory has assisted researchers from many departments such as: Pathology, Orthopedics, Cardiology, Physiology and Biophysics, Nephrology, Dental, Radiology, Biomedical Engineering, Rheumatology, Microbiology, Hematology/Oncology, Neuropathology, Neuroscience, Cell Biology and Physics.



We perform Immunohistochemistry and Immunofluorescent stains on a full range of samples (frozen or paraffin sections) with different species (mouse, rat, rabbit, dog, monkey and human), & various type of tissues (soft tissues, xenografts, bones and teeth). We also provide consultation on antibody selection, tissue preparation and histomorphometric analysis.

Processing hard tissue requires highly specialized techniques, unique equipment, and technical expertise. Histological sections may be obtained from fresh frozen bones, decalcified and paraffin-embedded bones, or from non-decalcified, plastic-embedded bones & implants.



Dezhi Wang, M.D., HTL, QIHC (ASCP), Lab Manager
Email: dwang@uab.edu Phone: 205-934-2007

Shi Wei, M.D., Ph.D. Co-director, PCRL
Email: swei@uab.edu, phone: 205-996-7995

Gene P. Siegal, M.D., Ph.D., Director, PCRL
Email: gsiegal@path.uab.edu Phone: 205-934-6608

Jack E Lemons, Ph.D., Professor, School of Dentistry
Email: jlemons@uab.edu Phone: 205-934-9206