

The Emotional, Behavioral, and Cognitive Implications of Trauma, Abuse, and Neglect in Children and Adolescents Aged 3–21 Years: A Systematic Review

Department of Occupational Therapy
University of Alabama at Birmingham

Rachel Summerlin, OTS, Hannah Wilson, OTS, Sadie Rucker, OTS, Emma Sullins, OTS, Maggi Welch, OTS, Mackenzie Steger, OTS

Objective

To identify children and adolescents aged 3 to 21 years who have been exposed to trauma, abuse, or neglect and to examine the emotional, behavioral, and cognitive implications of these events.

Research Question

How do trauma, abuse, or neglect affect the emotional, behavioral, and cognitive state of children?

Introduction

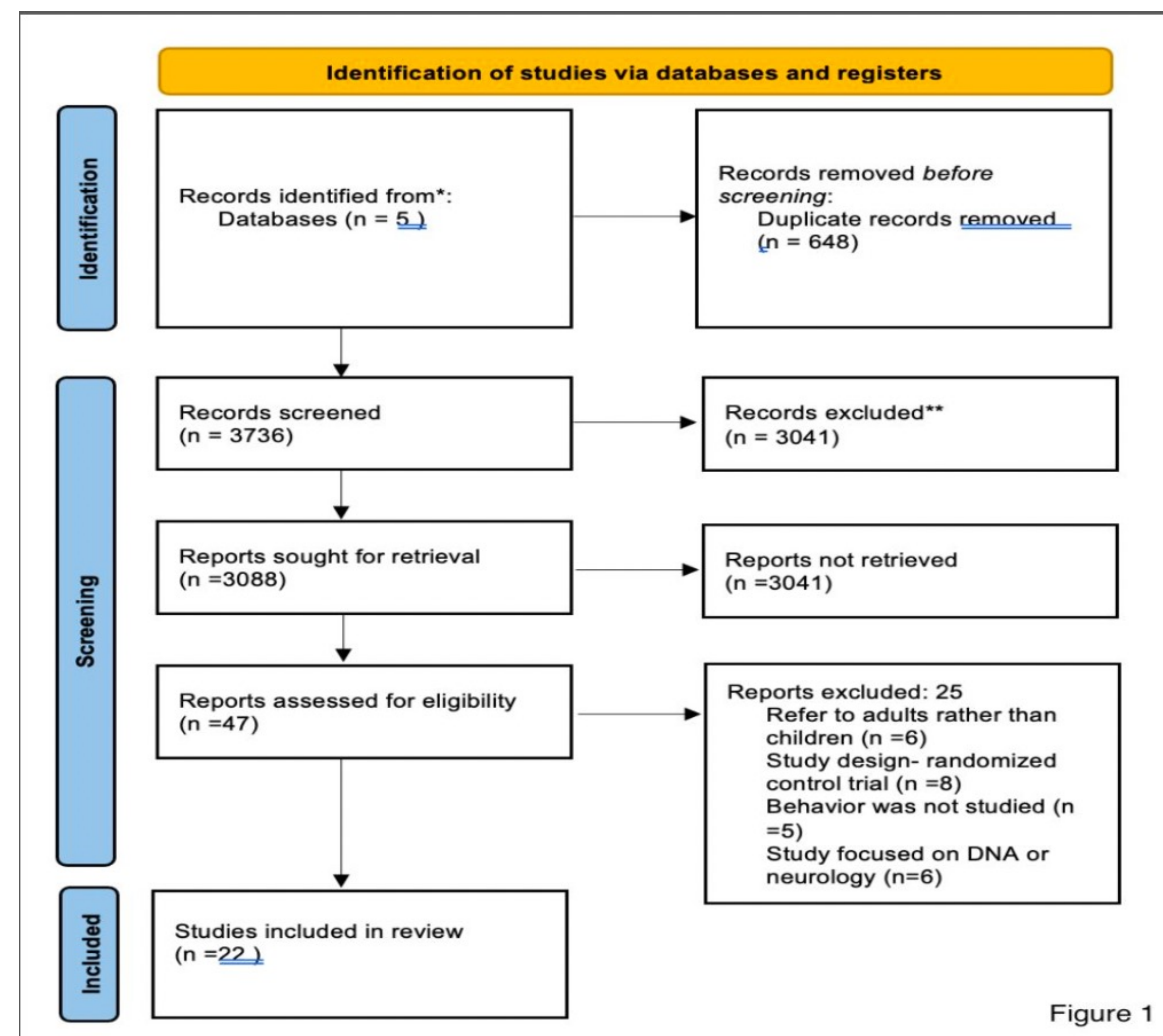
Gaining a more in-depth understanding of how trauma, abuse, and neglect affect individuals' emotional, behavioral, and cognitive states can help occupational therapists provide proper care for those who have experienced these adverse events. The information extracted by this systematic review emphasized the importance of early detection of children and adolescents at higher risk and the use of trauma-informed methods of care, which could help reduce poor outcomes for children and adolescents with a history of trauma.

Methods

Covidence was used to conduct screening for this review. **Exclusion criteria:** (1) systematic review or meta-analysis, (2) most individuals in the study sample were older than 18 years, (3) the outcomes of the study did not focus on behavior, (4) or the study looked at results of DNA or neurologic testing.

Results

Twenty-two studies highlighted behavioral, emotional, psychological, or cognitive signs and symptoms or a combination of these. Outcomes included: increased symptoms of depression and suicidal behaviors, decreased emotional management, increased symptoms of anxiety, and negative effects on social participation. Three studies examined the cognitive and behavioral effects of trauma on children's development.



Study	Was the research question or objective in this paper clearly stated?	Was the study population clearly specified and defined?	Was the participation rate of eligible persons at least 50%?	Were all the subjects selected or recruited from the same or similar populations?	Was a sample size justification, power description, or variance and effect estimates provided?	For the analyses in this paper, were the exposure or outcome(s) being measured?	Was the timeframe sufficient so that one reasonably expect to see an association between exposure and outcome if it existed?	For exposures that can vary in amount or level, did the study examine different levels of the exposure?	Were the exposure measures (independent variables) consistently implemented across all study participants?	Was the exposure(s) assessed more than once over time?	Were the outcome measures (dependent variables) clearly defined, valid, reliable, and implemented?	Were the outcome assessors blinded to the exposure status of participants?	Was loss to follow-up after baseline 20% or less?	Were key potential confounding variables measured and adjusted statistically for their impact on the association between exposure(s) and outcome(s)?	Summary Quality	Reviewers' Update
Alix	✓	✓	✓	✓	x	✓	✓	x	✓	x	✓	x	x	x	✓	SR, MS
Augusti	✓	✓	✓	✓	✓	✓	✓	x	✓	x	✓	x	x	x	✓	SR, MS
Barzilai	✓	✓	✓	✓	x	✓	✓	x	✓	x	✓	x	x	✓	✓	SR, MS
Carrera	✓	✓	✓	✓	x	✓	✓	x	x	x	✓	x	x	✓	✓	SR, MS
Chang	✓	✓	✓	✓	✓	✓	✓	x	x	x	✓	x	NA	x	✓	RS, MW
Chen	✓	✓	✓	✓	✓	✓	✓	✓	x	x	✓	x	NA	✓	✓	RS, MW
Curcio-Hadziagic	✓	✓	✓	✓	x	✓	✓	x	x	x	✓	x	NA	x	✓	RS, MW
Durmusoglu-Saltali	✓	✓	✓	✓	x	✓	✓	x	x	x	✓	x	NA	x	✓	MW, RS
Hecker	✓	✓	✓	✓	✓	✓	✓	✓	✓	x	✓	✓	NA	✓	✓	MW, RS
Mills	✓	✓	✓	✓	✓	x	✓	✓	x	✓	✓	x	✓	✓	✓	MW, RS
Paul	✓	✓	✓	✓	✓	x	✓	✓	✓	x	✓	x	NA	✓	✓	MS, SR
Perez	✓	✓	x	✓	x	x	✓	x	✓	x	✓	x	NA	✓	✓	MS, SR
Spratt	✓	✓	x	✓	✓	x	✓	x	✓	x	✓	x	NA	✓	✓	MS, SR
Tooker	✓	✓	✓	✓	✓	x	✓	x	✓	x	✓	x	NA	✓	✓	MS, SR
Tran	✓	✓	✓	✓	✓	✓	✓	x	✓	x	✓	x	NA	x	✓	HH, ES
Vachon	✓	✓	✓	✓	✓	✓	✓	x	✓	x	✓	x	NA	✓	✓	HH, ES
Valentino	✓	✓	✓	✓	✓	✓	✓	x	✓	x	✓	x	NA	x	✓	HH, ES
Vizuel (2014)	✓	✓	✓	✓	✓	✓	✓	x	✓	x	✓	x	✓	✓	✓	HH, ES
Vizuel (2015)	✓	✓	✓	✓	✓	✓	✓	x	✓	x	✓	x	NA	✓	✓	ES, HH
Wherry	✓	✓	✓	✓	✓	✓	✓	x	✓	x	✓	x	NA	✓	✓	ES, HH
Witt	✓	✓	x	✓	x	✓	✓	✓	✓	x	✓	x	x	x	✓	ES, HH
Yoon	✓	✓	✓	✓	x	✓	✓	x	✓	x	✓	x	NA	✓	✓	ES, HH
TOTAL PERCENTAGE	100%	100%	86%	100%	64%	77%	100%	23%	72%	9%	100%	5%	9%	64%		

Conclusions

Adolescents who experienced some form of trauma, abuse, or neglect were negatively affected in the social, cognitive, and emotional domains.